

Diagnostic Tools



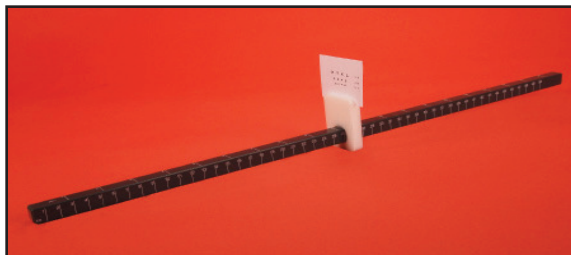
Automated Confrontation Test

- ☒ An automated LED gross confrontational visual field tester
 - ☒ Fast (both eyes in less than a minute)
- 17002 \$189.00



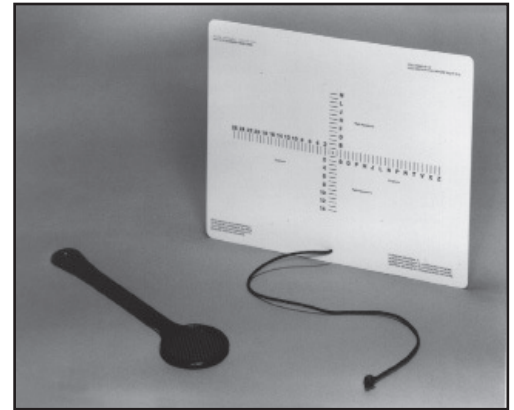
EyeView™ Visualizing Scope

- ☒ Gives patients a fascinating view of floaters and cataract opacity in their eyes
 - ☒ Good educational tool
 - ☒ Easy to Use
- 15220 \$39.00



R-50 Near Point Rule

- ☒ Easy To Read
 - ☒ Includes Acuity Card
 - ☒ Durable
 - ☒ High Quality
- 15150 \$65.00



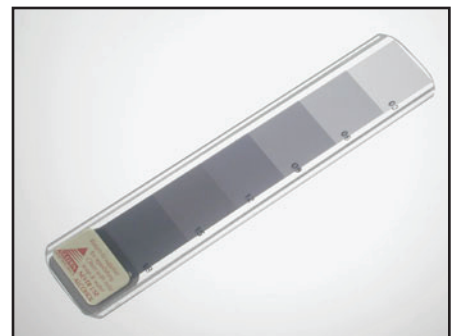
Eye Alignment Near Card

- ☒ Quantitative test
 - ☒ Portable/easy to use
 - ☒ Measures vertical and horizontal deviation
 - ☒ Maddox included
- 15114 \$29.00



Luedde Exophthalmometer

- ☒ Pocket size
 - ☒ Accurate parallax correction
 - ☒ Modestly priced
 - ☒ Leather case
- 16104 \$29.00



Neutral Density Bar

- ☒ Six standard ND levels
 - ☒ Convenient "prism bar" format
 - ☒ Compact, slides into pocket
 - ☒ Quantifies APD accurately
- 15118 \$60.00