

Astigmatism Eye Model

- ☒ Demonstrates Astigmatism
- ☒ Myopia
- ☒ Hyperopia
- ☒ Refraction error

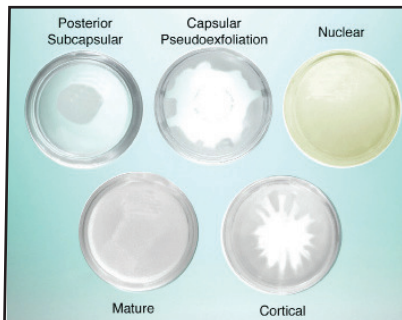
15123 \$99.00



Cataract Eye Model

- ☒ Includes 5 Interchangeable lenses
- ☒ Subcapsular
- ☒ Capsular
- ☒ Mature
- ☒ Cortical
- ☒ Nuclear

15129 \$99.00



Cataract Lenses

- ☒ Subcapsular
- ☒ Capsular
- ☒ Mature
- ☒ Cortical
- ☒ Nuclear

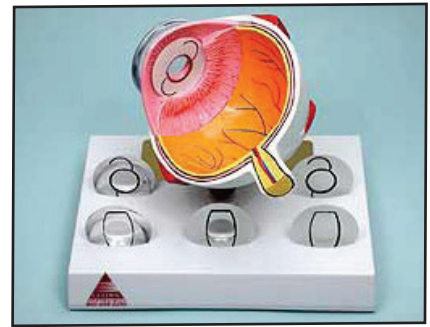
15119 \$49.00



Cornea Model

- ☒ Includes 5 Interchangeable Corneas
- ☒ Keratoconus
- ☒ Bullous Keratopathy
- ☒ Fuch's Endothelial Dystrophy
- ☒ Recurrent Corneal Erosion
- ☒ Normal

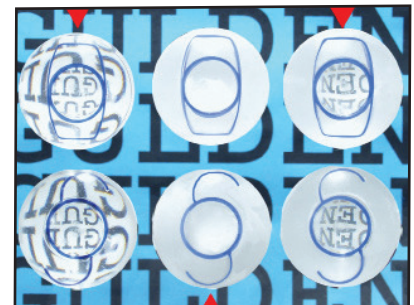
15182 \$99



IOL Eye Model

- ☒ Includes 6 Interchangeable lenses
- ☒ IOL and Toric implants of clear posterior capsule, cloudy capsule, and post YAG posterior capsulotomy.

15149 \$99.00



IOL Lenses

- ☒ IOL and Toric implants of clear posterior capsule, cloudy capsule, and post YAG posterior capsulotomy.

15147 \$49.00