

Color Vision

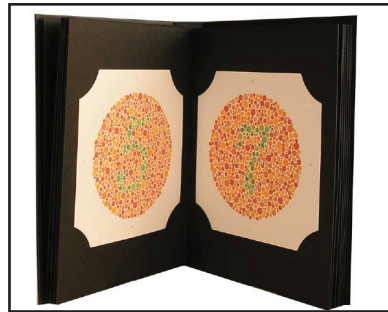


HRR Pseudoisochromatic Plates

- Congenital and aquired testing

15251

\$229



Ishihara 14 Plate

15177

\$135

Ishihara 24 Plate

15121

\$170

Ishihara 38 Plate

15125

\$195



Color Vision Testing Made Easy

15345

\$110

Color Vision

Gulden Ophthalmics



“C” Daylight Glasses™

- Corrects Normal Incandescent Light to Daylight Illumination
- Precise Type “C” Illumination
- Provides Accurate Color Test Results
- Compatible with All Color Tests 15115 \$45



C Daylight Glasses Lamp Kit

- Everything you need for accurate color testing
- Includes lamp, 100 watt bulb & C Daylight Glasses
- Easy to use and store 15113 \$75



Farnsworth Lantern Flashlight

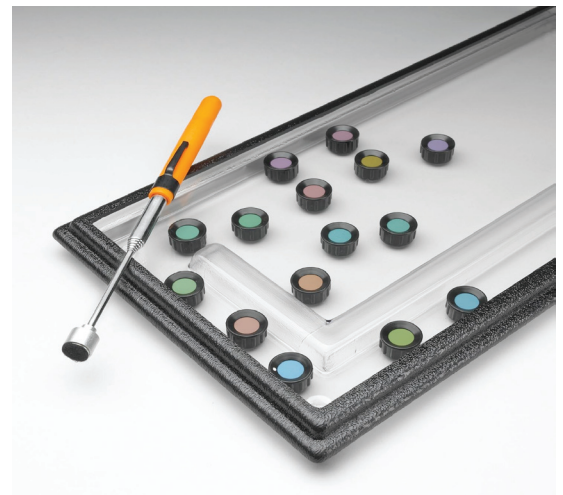
- 9 Interchangeable Filters
- Accurate
- inexpensive Substitute
- Portable 15171 \$199



Farnsworth Dichotomous D-15 Lanthony Desaturated D-15

- Quick and Easy to Remove
- Munsell Color System
- Includes “C” Daylight Glasses

Farnsworth	15126	\$159
Lanthony	15127	\$159
Combo D-15 Color Test		
15130		\$299



Magnetic Farnsworth D-15

15363 \$239

225 Cadwalader Avenue
Elkins Park, PA 19027-2020

215-884-8105

Fax 215-884-0418

e-mail: info@guldenophthalmics.com

www.guldenophthalmics.com

02/12/2013

Eye Conformers / Spheres / Shields



Cox II Laser Eye Shields

- For protection of the patient and personnel
- non-reflective surfaces disperse laser light
- For skin resurfacing or incision procedures

21261	Extra Small	\$115.00
21262	Small	\$115.00
21264	Medium	\$115.00
21266	Large	\$115.00



Durette IV External Eye Laser Shields

- Includes 1 assembled pair of external shield and extras.

Total parts comprise 2 metal cups, 2 nasal and 2 temporal metal attachments, 2 elastic headbands and a medium plastic sterilizing tray.

21555 \$299.00



Autoclavable Ocular Shields

23204 \$66.00



Durette III External Eye Laser Shields

- Includes 1 assembled pair external shields and extras. Total parts comprise of 2 metal cups, 4 nasal and 4 temporal plastic attachments, 2 elastic headbands and a medium plastic sterilizing tray

21445 \$299.00



Durette Plastic Eye Goggles

- Light that is usually created by fluorescent lamps, bright LEDs or diachronic filament bulbs. VISIBLE VIOLET LIGHT IN THE RANGE OF 405-420.

23442 \$79.00



Dual Foam Lined Eye Shields

- New Soft Smooth Latex Free
- Comfortable Adjustable Headband.
- Shatterproof Polycarbonate Plastic

14102 \$4
14103 (Dozen) \$44

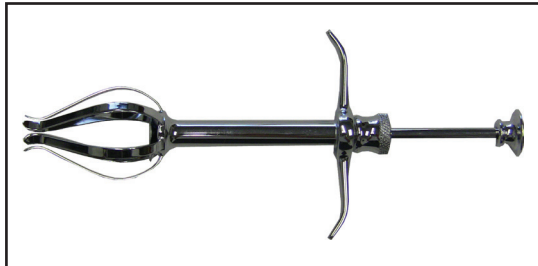
Eye Conformers / Spheres / Shields



Symblypharon Rings

■ The rings prevent adhesions and shortening or retraction of the fornices and cul-de-sacs without touching the cornea.

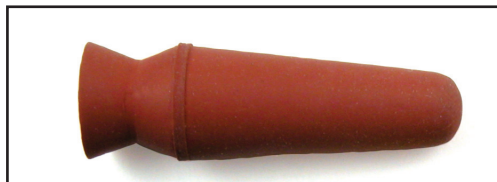
14345	Small	\$75.00
14346	Medium	\$75.00
14347	Large	\$75.00



Sphere Introducer and Holder

■ The Eye Sphere Introducer is ergonomically designed for efficient, accurate placement; it utilizes dependable sphere holding prongs and a spring loaded plunger.

16118	\$179.00
-------	----------



Suction Cups

■ Traditional large red suction cups for extracting conformers and laser shields. Sold by the Dozen.

23012	\$35.00/ Dozen
-------	----------------



Autoclavable Desmarres Lid Retractor

■ Desmarres Lid Retractor is for retracting eye lids. Yellow color makes them easy to locate and see through.

23311	\$49.00
-------	---------



Autoclavable Jaeger Lid Plate

■ Autoclavable Jaeger Lid Plate for manipulating eye lids. Yellow color makes them easy to locate and see through.

23293	\$49.00
-------	---------



Jaeger Lid Plate

■ Acrylic Jaeger Lid Plates, Concave with small and medium ends, 22 - 25 mm, (Not autoclavable or for Laser use)

16102	\$20.00
-------	---------

Eye Conformers / Spheres / Shields



PMMA Eye Spheres - (Sterile)

- 14250 - 10mm \$42.00
- 14251 - 12mm
- 14252 - 14mm
- 14253 - 16mm
- 14254 - 18mm
- 14255 - 20mm
- 14256 - 22mm



PMMA Eye Conformers -(sterile)

without holes \$42.00

- 14264 - Small
- 14265 - Medium
- 14266 - Large

With holes \$49.00

- 14267 - Small
- 14268 - Medium
- 14269 - Large



Eye Patch Shield

15364 \$9.00



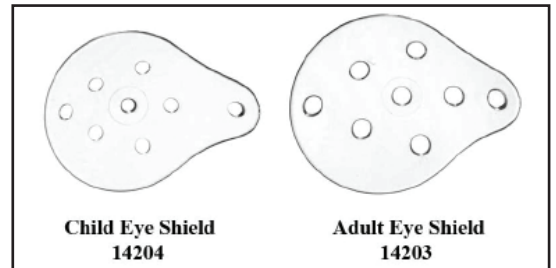
Silicone Eye Spheres (nonsterile)

- 14351 - 12mm \$42.00
- 14352 - 14mm
- 14353 - 16mm
- 14354 - 18mm
- 14355 - 20mm
- 14356 - 22mm



PMMA Orbital Implant Sizer Kit

14170 \$49.00



PMMA Eye Shields

- 14203 adult \$40.00 / doz
- 14204 child \$40.00 / doz

Consumables



Chinrest Paper
15326 \$7.00



Schirmer Tear Flow Strips
152T5 \$13.00



Fluorescein Glo Strips
152F5 \$28.00



Lissamine Green Strips
152G5 \$21.00

Contact Lens Tools

GuldenOphthalmics

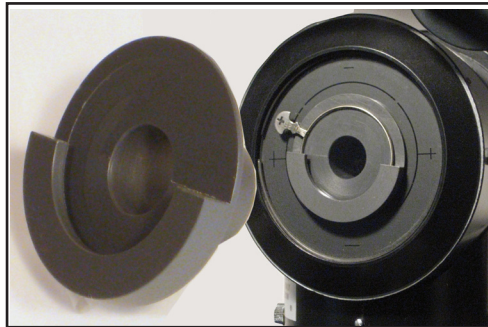


Contact Lens Check & Keratometer Calibrator

- Easily Mounts on Most Keratometers & Slit Lamps
- Check for Warpage or Any Changes to the Base Curve & Calibrate your Keratometer
- Eliminates a need for a Radiuscope
- Economical

15179

\$49



Keratometer Range Extender

- Extends range; flatter to 30.87D or steeper to 60.62D.
- Attaches easily for temporary or permanent use
- Eliminates, bothersome taping & alignment of lenses

15180

\$40



Contact Lens Polisher Kit

- Cordless
- Palm-size
- Fast motor saves time
- Includes flat and cone shaped foam pads

15172

\$99

225 Cadwalader Avenue
Elkins Park, PA 19027-2020
215-884-8105

Fax 215-884-0418

e-mail: info@guldenophthalmics.com

www.guldenophthalmics.com

02/12/2013

Diagnostic Tools



Automated Confrontation Test

- An automated LED gross confrontational visual field tester
- Fast (both eyes in less than a minute)

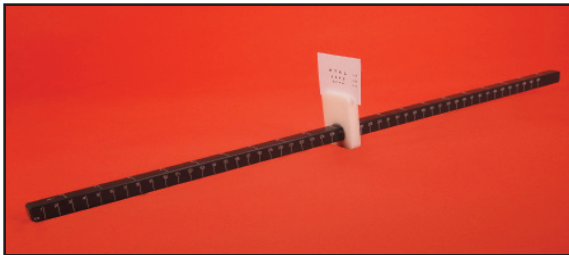
17002 \$199.00



EyeView™ Visualizing Scope

- Gives patients a fascinating view of floaters and cataract opacity in their eyes
- Good educational tool
- Easy to Use

15220 \$39.00



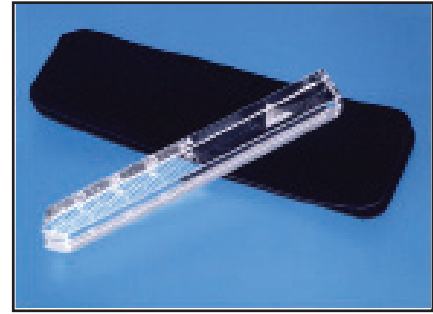
R-50 Near Point Rule

- Easy To Read
- Includes Acuity Card
- Durable

15150 \$69.00

Accommodation Cards (5pack)

15201 \$15.00



Luedde Exophthalmometer

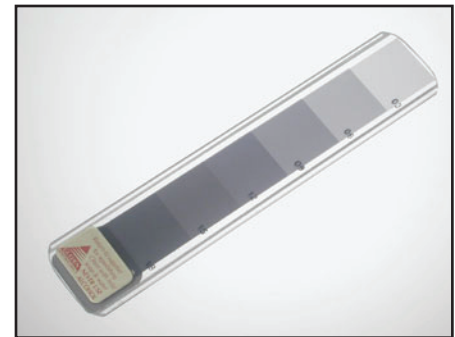
- Pocket size
- Accurate parallax correction
- Modestly priced
- Leather case

16104 \$30.00



Dual Luedde Exophthalmometer

16103 \$125.00



Neutral Density Bar

- Six standard ND levels
- Convenient "prism bar" format
- Compact, slides into pocket
- Quantifies APD accurately

15118 \$60.00

Diagnostic Tools

Gulden Ophthalmics



StereoAcuity Test

15211

\$180.00



Wraparound Polarized Glasses

Adult

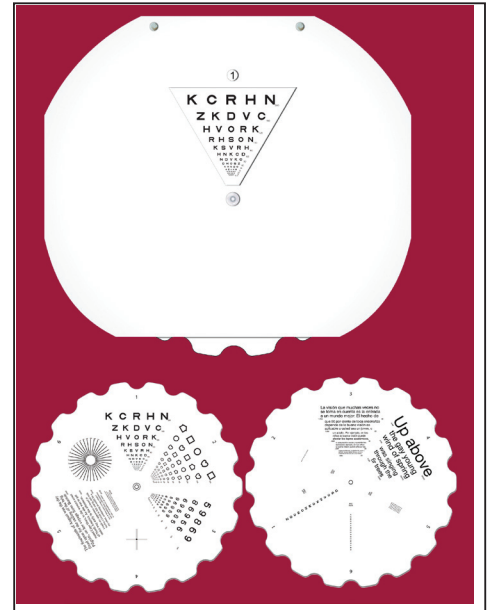
15200

\$16.00

Child

15199

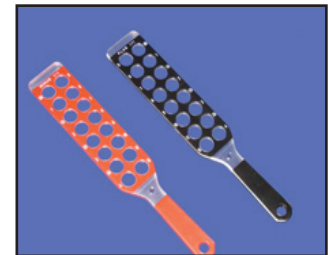
\$15.00



Phoropter Roto Chart

15151

\$45.00



Retinoscopy

15161

\$115

225 Cadwalader Avenue
Elkins Park, PA 19027-2020

215-884-8105

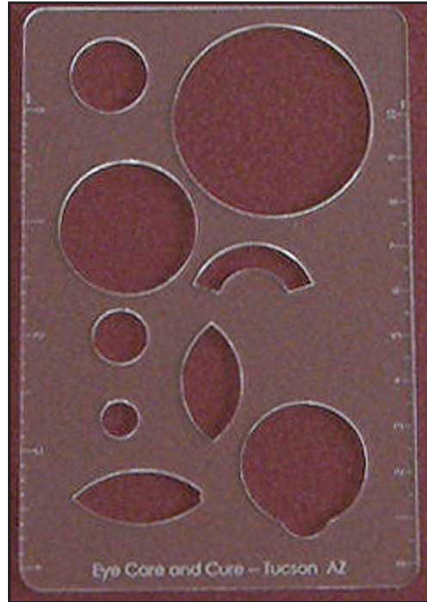
Fax 215-884-0418

e-mail: info@guldenophthalmics.com

www.guldenophthalmics.com

02/12/2013

Diagnostic Tools



Diagnostic Eye Template

- Saves time

15178

\$8.00



Digital PD Ruler

- R button measures right eye
- L button measure left eye
- Accurate and responsive digital display
- Automatic shut off when placed on level surface

17005

\$129.00



Optyse Pocket Ophthalmoscope

- Compact and easy to use
- Ideal for rapid and accurate central fundus evaluation

17008

\$149.00



Portable Combination Near Vision Tester

17007

\$169.00



Penlight/Transilluminator 5X Magnifier

- Convenient & Saves time

15204

\$13.00

225 Cadwalader Avenue
Elkins Park, PA 19027-2020
215-884-8105

Fax 215-884-0418

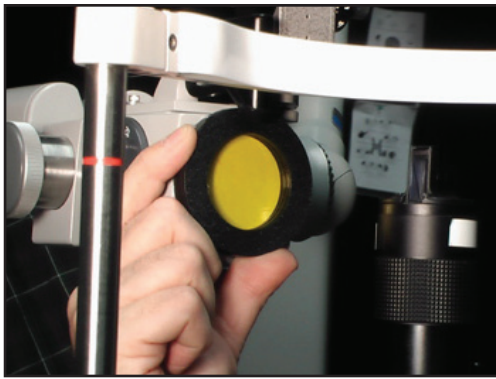
e-mail: info@guldenophthalmics.com

www.guldenophthalmics.com

02/12/2013

Diagnostic Tools

Gulden Ophthalmics



Slit Lamp Yellow Filter

- Use Detecting Subtle Staining
- For Dry Eye Syndrome
- Better Visualization of RGP Fluorescein Patterns
- Saves Time

15192

\$49.00



Digital Pupillometer

- With Vertex Distance

17006

\$249.00



Ohlson VSEF

- Easily fits in your pocket.
- The yellow filter increases the visibility of the fluorescein pattern.
- The red lens increases the visibility of lissamine green staining on the bulbar conjunctiva.

12135

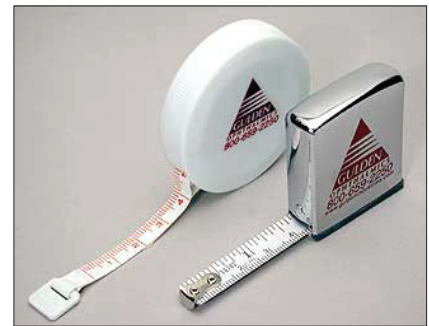
\$49.00



Disposable Penlight

15116

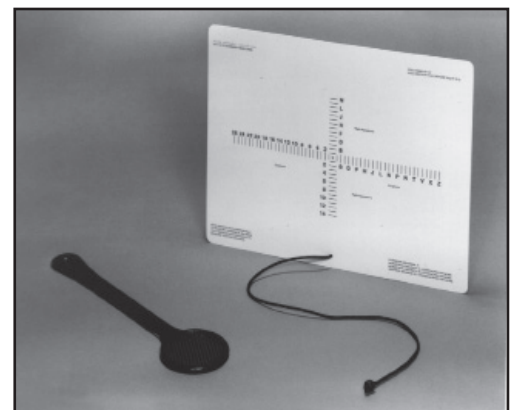
\$ 4.00



Plastic Tape Measure

16105

\$ 5.00



Eye Alignment Near Card

- Quantitative test
- Portable/easy to use
- Measures vertical and horizontal deviation
- Maddox included

15114

\$30.00

225 Cadwalader Avenue
 Elkins Park, PA 19027-2020
 215-884-8105
 Fax 215-884-0418
 e-mail: info@guldenophthalmics.com
www.guldenophthalmics.com
 02/12/2013

Drop Trays / Organizers



Disposable Spray Caps

- For the Uncooperative patient.
- Fits Most Ophthalmic Drop Bottles
- Use for Mydriatic, Anesthetic, etc.
- Incl: (Discard On) Labels

15195

\$22/Dz



Strip Caddy/Disposal Kit

- Convenient & safe way to dispose strips
- Small Footprint
- Attractive
- Save Time

15205

\$45.00



Opticare Eye Drop Dispenser

- Help patients use their eye drops effectively
- Holds the eye lid open

15196

\$22.00



Tip Cleaner Caddy

- Quickly Disinfects Tonometer Tips
- Removable, Refillable Cup
- Easily Maintained by a Technician

15169

\$29.00



Caddy 6

- Convenient
- Small Footprint
- Attractive

15168

\$17.00



Opticare Eye Drop Dispenser (10 Pk) Display

15197

\$197.00

225 Cadwalader Avenue
Elkins Park, PA 19027-2020
215-884-8105

Fax 215-884-0418

e-mail: info@guldenophthalmics.com

www.guldenophthalmics.com

02/12/2013

Dry Eye / Shields / Guards



Lagophthalmos Kit

- No Need to Tell Patients to Tape Eye Closed
- Storage Case Included
- Low Cost

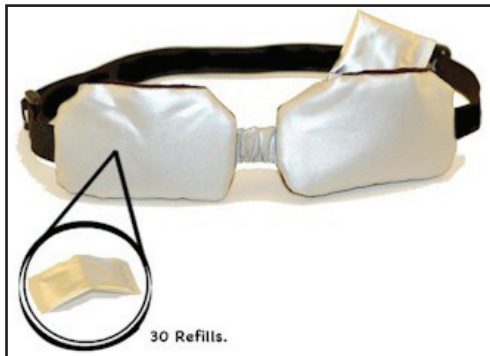
15170 \$32



EyeGenie Kit

- Improves the care of patients suffering from inflamed eyelids, and tired and dry eyes

14227 \$28



EyeGenie Refils (30pk)

14228 \$21



Lasik Eye Guard

- Very Comfortable, Adjustable
- Aesthetically Pleasing
- Anti-fog Ventilation Holes

15124 10 Pk \$69



Gel Eye Patch & Mask

- Retains Heat/Cold a Long Time

14225 Mask (2 Pack) \$13

Instruments & Accessories

GuldenOphthalmics

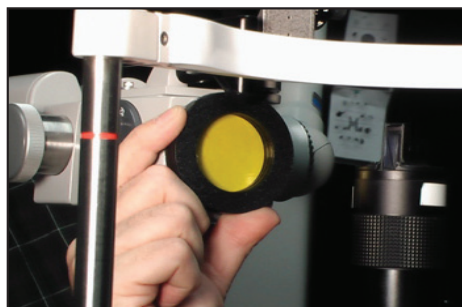


Slit Lamp Breath Shield

- Easy to install
- Fits Most Slit Lamps

14226

\$28



Slit Lamp Yellow Filter

- Use Detecting Subtle Staining
- For Dry Eye Syndrome
- Better Visualization of RGP Fluorescein Patterns
- Saves Time

15192

\$49



Curved Locking Tweezers

- Includes two slots for holding punctum plugs.

16117

\$79.00



Sphere Introducer

16118

\$179



Slit Lamp Elbow Rest

- Keeps Users' Arm & Hand Steady
- For holding Lenses and Filters
- Elevates from 5 to 14.5 cm
- Low Cost

15194

\$39



MG Expressor Kit

- Performed easily on outer lid with or without slit lamp
- Immediate patient relief post procedure
- Gel masks for heating eye lids & disposable roller covers included

16111
Roller Covers (25pk)

\$139

16C11

\$10

Stainless Steel MG Lid Plate

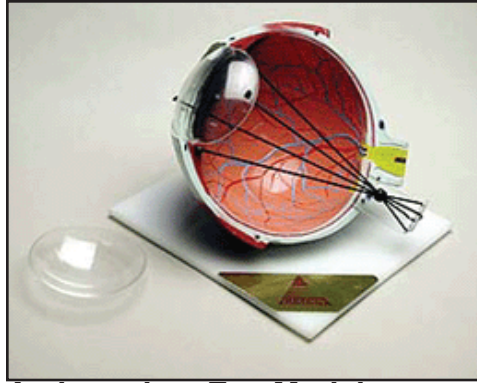
16P11

\$59

225 Cadwalader Avenue
Elkins Park, PA 19027-2020
215-884-8105
Fax 215-884-0418

e-mail: info@guldenophthalmics.com
www.guldenophthalmics.com

Models

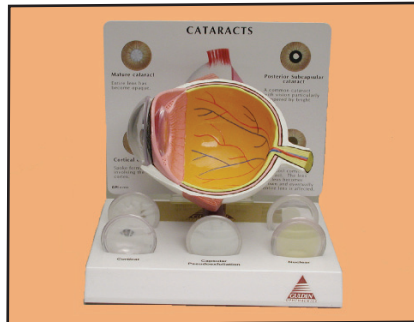


Astigmatism Eye Model

- Demonstrates Astigmatism
- Myopia
- Hyperopia
- Refraction error

15123

\$99.00

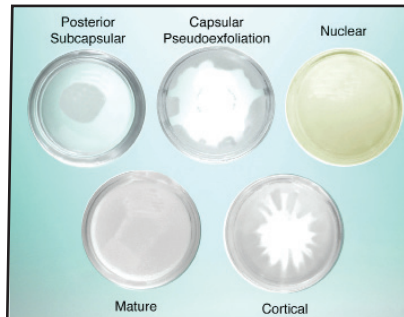


Cataract Eye Model

- Includes 5 Interchangeable lenses
- Subcapsular
- Capsular
- Mature
- Cortical
- Nuclear

15129

\$99.00



Cataract Lenses

- Includes 5 Interchangeable lenses
- Subcapsular
- Capsular
- Mature
- Cortical
- Nuclear

15119

\$49.00

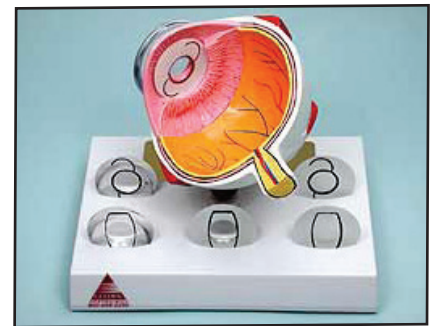


Cornea Model

- Includes 5 Interchangeable Corneas
- Keratoconus
- Bullous Keratopathy
- Fuch's Endothelial Dystrophy
- Recurrent Corneal Erosion
- Normal

15182

\$99.00

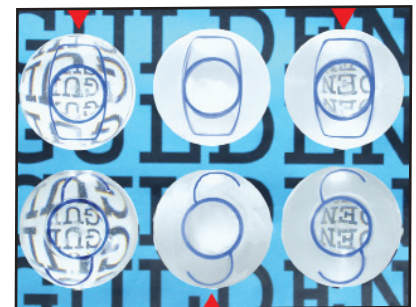


IOL Eye Model

- Includes 6 Interchangeable Corneas
- IOL and Toric implants of clear posterior capsule, cloudy capsule and post YAG posterior capsulotomy.

15149

\$99.00



IOL Lenses

- IOL and Toric implants of clear posterior capsule, cloudy capsule and post YAG posterior capsulotomy.

15147

\$49.00

225 Cadwalader Avenue
Elkins Park, PA 19027-2020

215-884-8105

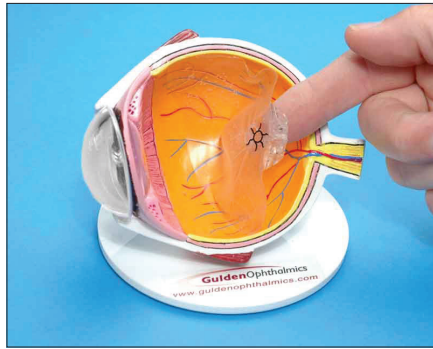
Fax 215-884-0418

e-mail: info@guldenophthalmics.com

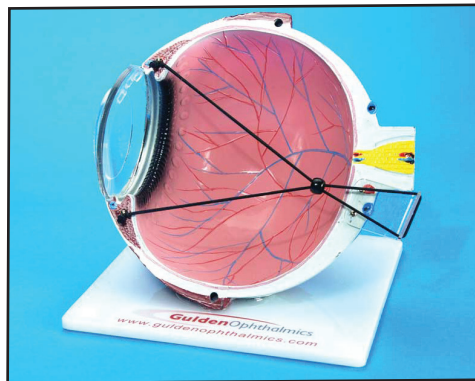
www.guldenophthalmics.com

02/18/2013

Models



Detachment Eye Model
15163 \$99.00



Lasik Eye Model
15120 \$99.00



Small Eye Model

- Assists the ophthalmic professional in educating patients in the anatomy of the human eye.

15222 \$79.00



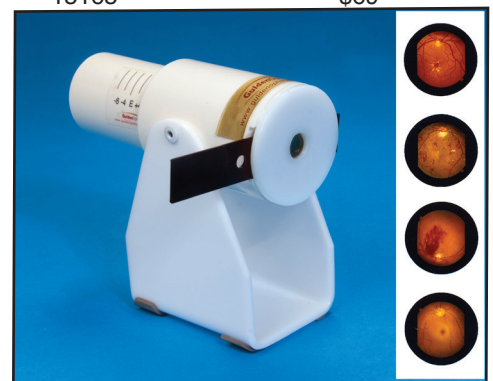
Complete Eye Model
15152 \$99.00



**Punctum Plug/
Tear Duct Model**

- Shows the Tear Ducts
- Lower Duct is open
- Punctum Plug can be inserted
- Saves Time

15165 \$69



Timberlake Training Eye Model

- Improve the Teaching of Fundoscopy Skills
- Changeable Pupil Sizes
- Multiple Retinal Pathologies
- Low Cost

15173 \$99

Models

GuldenOphthalmics



Siepser Vitreous Floater Demonstrator

- Quickly and easily explain "shadowing"

15153

\$49



Siepser Hemorrhage Demonstrator

15224

\$49



VTD Model

- AMD
- Diabetic Retinopathy
- Glaucoma

15223

\$99



Diabetic Eye Model

- Demonstrates the effects of diabetes on the kidneys, arteries, nerves and retina

15252

\$79

225 Cadwalader Avenue
Elkins Park, PA 19027-2020

215-884-8105

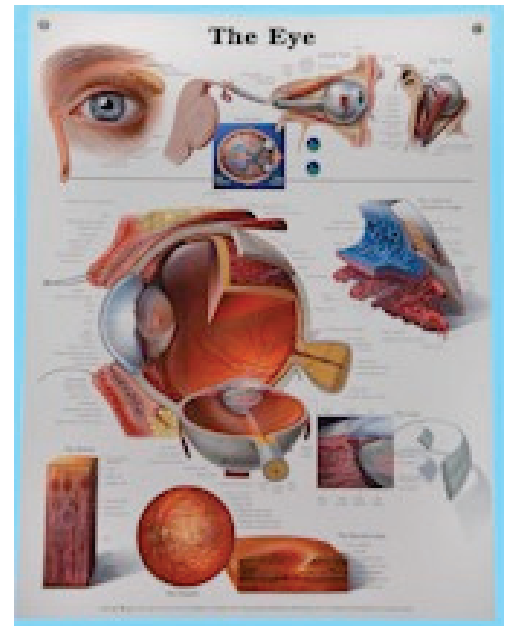
Fax 215-884-0418

e-mail: info@guldenophthalmics.com

www.guldenophthalmics.com

02/18/2013

Educational Posters



Educational Posters \$29.00

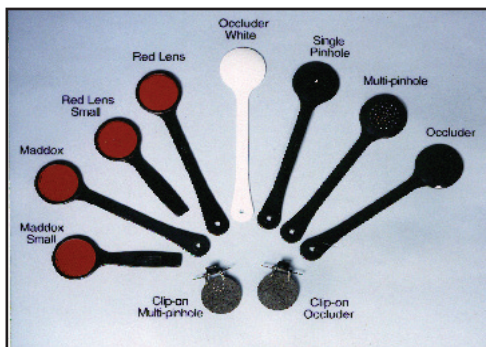
Eye Poster	15254
Eye Disorder Poster	15255



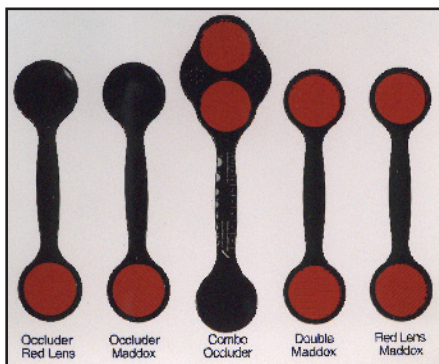
Clearly Visible Ear Model

15253 \$79.00

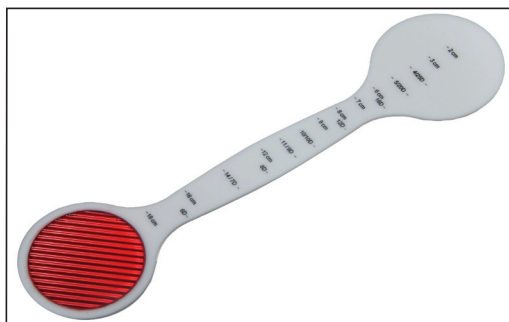
Occluders



12110	Occluder Black (Short)	\$8.00
12112	Occluder Black (Long)	\$9.00
12113	Maddox (Long)	\$12.00
12114	Maddox (Short)	\$9.00
12115	Red Lens (Long)	\$10.00
12116	Red Lens (Short)	\$9.00
12117	Occluder White	\$9.00
12127	Clip-on Multiple Pinhole	\$9.00
12128	Clip-on Occluder	\$8.00
12129	Single Pinhole	\$15.00
12130	Multiple Pinhole	\$18.00



12121	Occluder & Red Lens	\$15.00
12122	Occluder & Maddox	\$17.00
12126	Combo Occluder	\$29.00
12124	Double Maddox	\$18.00
12125	Maddox Red Lens	\$17.00



Lewerenz Accommodation Maddox

12137 \$29.00



Lorgnette Occluder

- Free Practitioners Hands
- Saves Time
- Easy to Use
- High quality

12133 \$17.00



Spielmann Occluder

- For Clinic or Office
- Frosted Occluder
- Easily Cleaned Finish
- Durable, Lightweight

12120 \$29.00

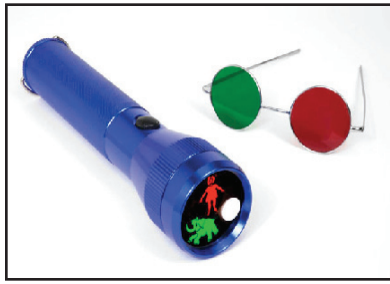
Clip-on
12131 \$19.00



Berens Pinhole Test

15102 \$5.00

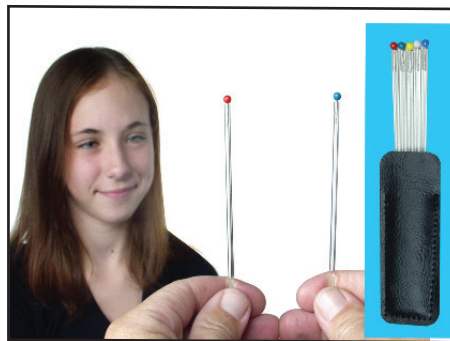
Pediatric Tools



LED Three Character Test

- High Quality
- Durable
- Anodized Finish
- Reversible Red & Green Spectacles

15305 \$45



Color Fixation Sticks

- Test Ocular Motility
- Test Confrontation Visual Fields
- Case Included
- Saves Time

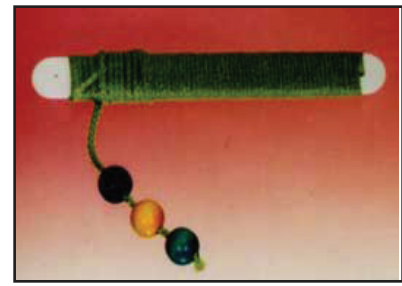
15176 \$20



Optokinetic Flag

- Simple Design
- No Patient Cooperation Required
- Abduction and Adduction
- Neurodegenerative Disease

15154 \$29



Brock String

15133 \$5.00



Combination Occluder/Fixation Point

- Flashing LED's
- Dual Purpose
- Child-friendly Design
- Coin Batteries Included

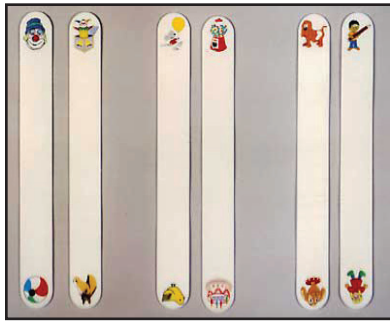
\$12



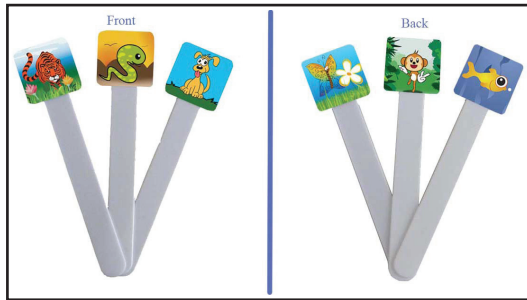
Pediatric Fixation Pack

15132 \$20.00

Pediatric Tools



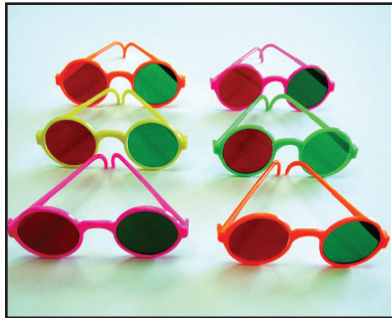
Pediatric Fixation Sticks
15314 \$16



Fixi-Stix

- 3D Wiggle pictures,
- Stimulation Targets for the Young Patient
- Combination of 6 pictures on front and back

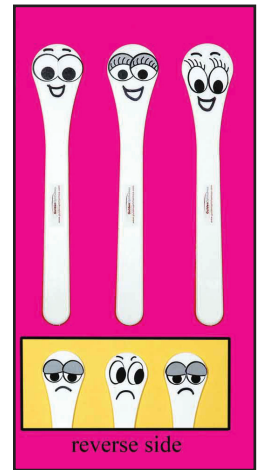
15312 \$21.00 (3 pack)



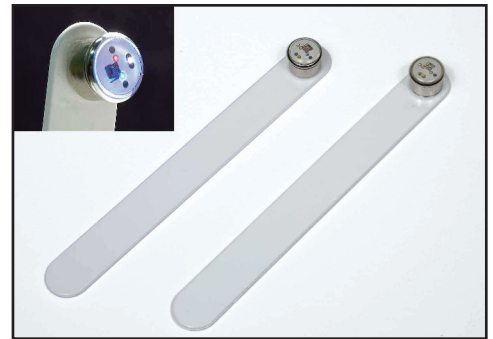
Red / Green Pediatric Glasses
15321 \$30.00 (6 pack)



Pediatric Screening Kit
15311 \$89.00



Face Fixation Sticks
15315 3 Pack \$16



Flashing Fixation Sticks

- Stimulation Targets for the Young Patient
- Easy Twist On and Off
- Coin Battery Operated

15325 \$20/Pair



Pediatric Fixation Wand

- Easy to use
- Aids in visual testing and therapeutic situations
- Attention getting light patterns

15215 \$10

225 Cadwalader Avenue
Elkins Park, PA 19027-2020

215-884-8105

Fax 215-884-0418

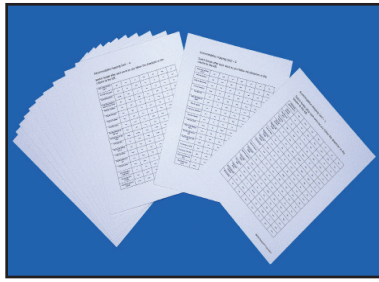
e-mail: info@guldenophthalmics.com

www.guldenophthalmics.com

02/18/2013

Pediatric Tools

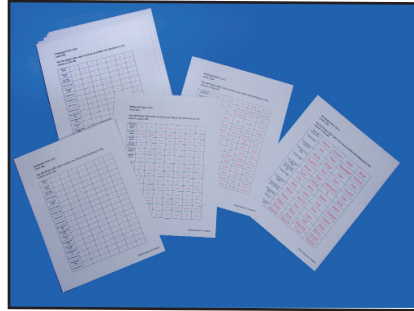
GuldenOphthalmics



Hopping Accomodative Facility Card (12)

15331

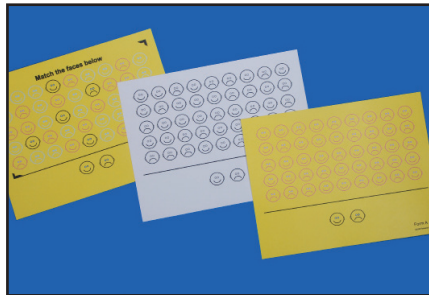
\$25



Amblyopia Rock Cards (20)

15334

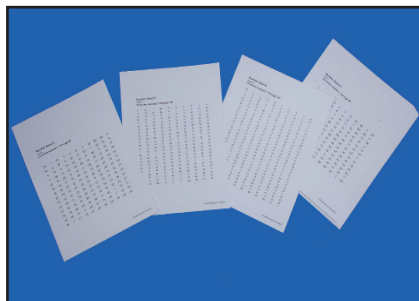
\$39



Face Form (3)

15332

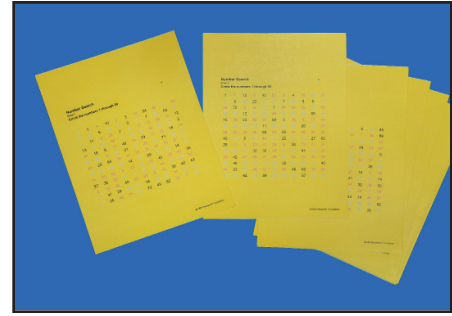
\$9



Number Search 1-50 & 1-100 (20)

15333

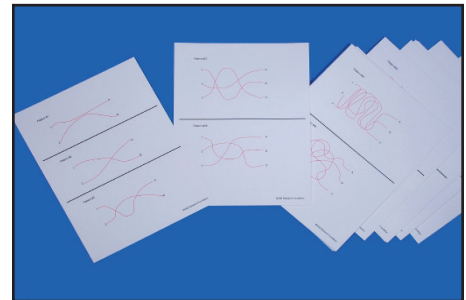
\$39



Red/Green Number Search 1-50 & 1-100 (20)

15335

\$39.00



Red Line Tracing

15336

\$49.00

NEW

Hopping Vision Therapy Cards

- These vision therapy activities are designed for use with accommodative and ocular motor therapies & also incorporate suppression controls for anit-suppression therapy
- The ocular motor activities are functional, interactive, and provide suppression cues for the intermittent strabismic or amblyope
- Therapies are easy to administer and use by professionals, as well as for home use by patients
- All cards are coated, re-usable with erasable markers, and come with complete instructions and red/green spectacles

Also Available as a full set

15330

\$189

225 Cadwalader Avenue
Elkins Park, PA 19027-2020

215-884-8105

Fax 215-884-0418

e-mail: info@guldenophthalmics.com

www.guldenophthalmics.com

Practice Eyes



I-BORG™ Practice Face

- Realistic shape and dimensions
- Central corneal thickness 0.5mm
- Peripheral corneal thickness 0.8mm
- 8mm "dilated" pupil

17102

\$149



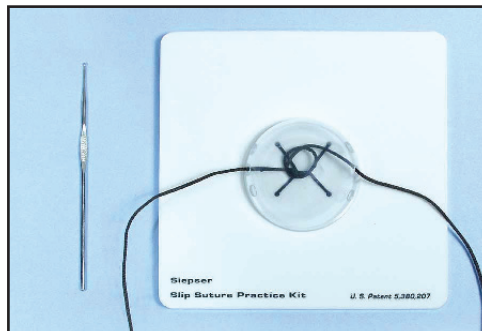
Phak-I

- Disposable Eyes
- Central corneal thickness 0.5mm
- Peripheral corneal thickness 0.8mm
- 8mm "dilated" pupil

17004

(4 Pack)

\$66.00



Siepser Slit Suture Kit

- Easy to Learn
- Includes Full Instruction CD
- Low Cost

16110

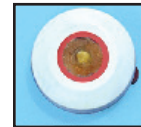
\$89



Phaco Practice Patient

15186

\$149

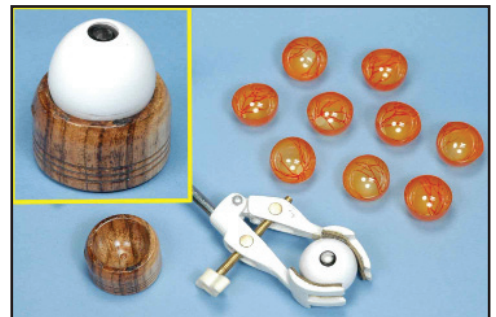


Phaco Practice Eyes

- Disposable Eyes
- More Convenient

15187

\$50.00(10pk)



Redi - Eye

- Practice Indirect Ophthalmoscopy & Photocoagulation
- Replacement retinal films
- Slit Lamp attachment

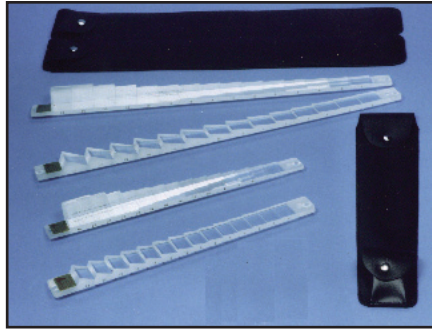
15207

\$159

15217 Films (10 Pack)

\$44.00

Prisms



Prism Bars - Low Birefringent

B-12	11113	\$95
BV-15	11117	\$105
B-16	11116	\$105
BV-15/B-16 Set	11314	\$198
BV-15/B-16 Set	11L14 Hard Case	\$198
LB-14 Long Bar	11111	\$155
LB-15 Long Bar	11112	\$155
LB-14 / LB-15 Set	11315	\$300



Magnetic Stick Prism Set

S-16	11L17	\$175
S-22	11L23	\$240



MS-10 Prism Set / Maddox Rod

1/2-1-2-4-6-8-10-15-20-25. Δ

11310	\$115.00
-------	----------



Combination Horizontal/Vertical Prism Bar

- Use alone or together
- Precisely calibrated for dual use
- Avoids variable strabismus results
- Measure primary and secondary deviations

11313	\$220
-------	-------



37mm Prism Sets Low Birefringent

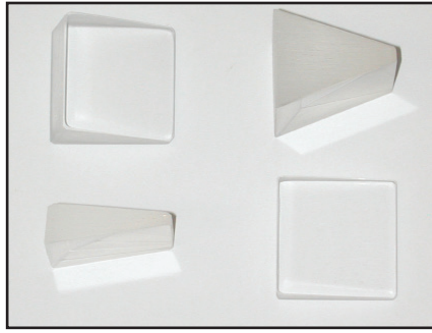
S-16	1/2-1-2-4-6-8-10-12-15-20-25-30-35-40-45-50 Δ	
11L16		\$145
S-22	1/2-1-2-3-4-5-6-7-8-9-10-12-14-16-18-20-25-30-35-40-45-50 Δ	
11L22		\$198



37mm Prism Sets - Low Birefringent

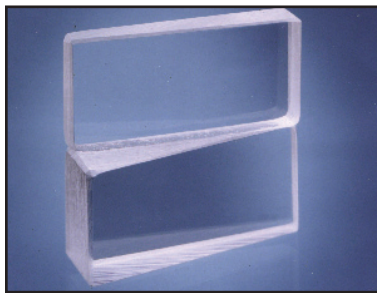
S-4	11304	5-10-15-20 Δ	\$48
S-8	11308	2 each 5-10-15-20 Δ	\$82
SS-8	11318	3- 5-8-10-12-15-20-25 Δ	\$84

Prisms



Square Prisms

Sizes 1/2-1-2-3-4-5-6-7-8-9-10-12-14-15-16-18-20-25-30-35-40-45-50 Δ
11101 \$9



Vergence Facility Prism

- Saves time (less than 2 minutes)
- All diopters available
- Minimal patient cooperation
- Delegate to a technician

11107 \$12

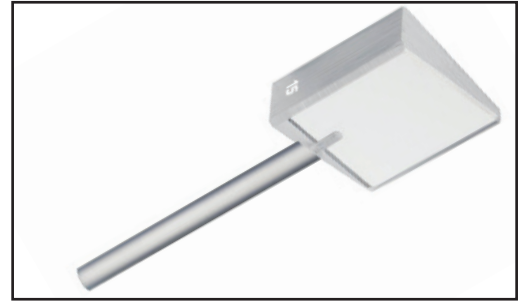


Magnetic Vergence Facility Prism

11207 \$20

Magnetic V/F Prism w/ Stick

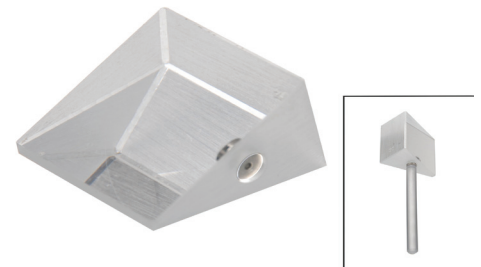
11208 \$16



Stick Prism

- For Vision Therapy
- No Finger Prints
- Easy To Use
- Available in all diopters

11104 \$12



Magnetic 38mm Square Prism

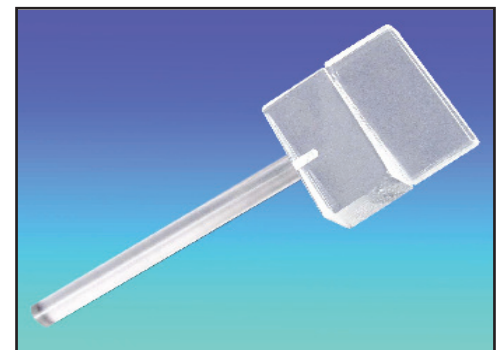
11201 \$12

Magnetic Stick

11202 \$6

Magnetic Prism w/ Stick

11204 \$15



Vergence Facility Stick Prism

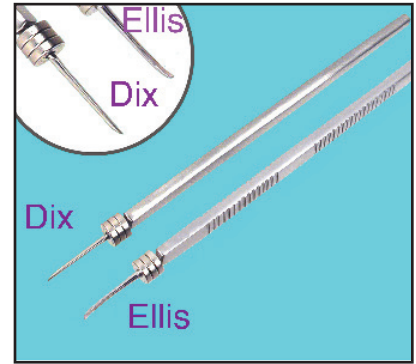
- Reduce Finger Prints
- Easy to Flip
- Convenient (fits in shirt pocket)
- Low Cost

11108 \$14

Surgical Tools



Curved Locking Tweezers
16117 \$79.00



Magnetic Spuds

- Less Tissue Damage
- Saves Time
- Strong Magnetic Field
- Self-Contained, No Energy Source Needed

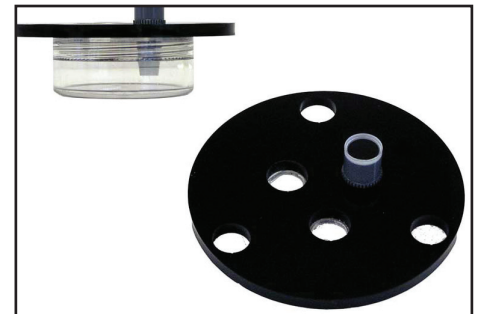
16108	Ellis	\$55
16109	Dix	\$55

Tonometers



Biro Tonometers

- 26 point check
 - Includes 4 weights
 - U.S. certification via AAO specs
 - Plunger retractor installation available
- | | |
|-------------------------------|-------|
| 13107 | \$329 |
| 13110 with Allen Modification | \$399 |



Tono Tip Cleaner

- Sterilize tonometers and parts

15175	\$19.00
-------	---------



Tip Cleaner Caddy

- Quickly Disinfects Tonometer Tips
 - Removable, Refillable Cup
 - Easily Maintained by a Technician
- | | |
|-------|---------|
| 15169 | \$29.00 |
|-------|---------|



Small Tono Tip Cleaner

- Portable
- It is quick and easy to use, and will save the doctor or technician time.

15225	\$29.00
-------	---------

225 Cadwalader Avenue
Elkins Park, PA 19027-2020

215-884-8105

Fax 215-884-0418

e-mail: info@guldenophthalmics.com

www.guldenophthalmics.com

02/18/2013

Test Cards

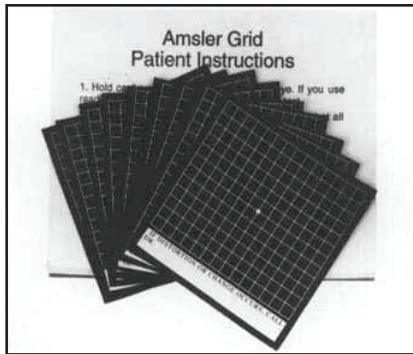
Gulden Ophthalmics



Dovie Drug & Peds Cards

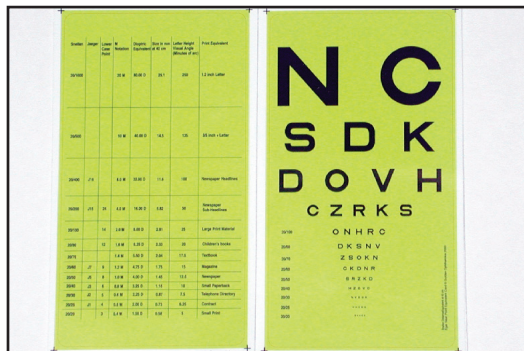
- Prescription Pad,, Pocket Size
- Concise Up-to-Date Information
- Laminated ■ Saves Time

15136	Drug	\$8
15137	Ped	\$8
15138	DM/HTN	\$8



Magnetic Modified Amsler Grid

15301 10 Pack \$13



Eger Equivalent Card

- Easy to Use
- Better contrast
- Easily Equates Readability to Acuity
- Saves Time

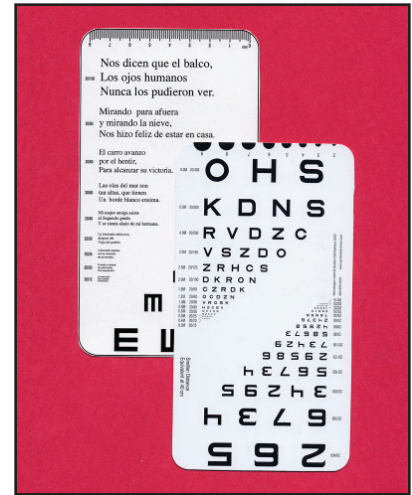
15134 \$9



Wormington Card

- More Accurate than the Rosenberg Card
- Versital
- Saves time

15135 \$7



Spanish Wormington Card

15128 \$8

225 Cadwalader Avenue
Elkins Park, PA 19027-2020

215-884-8105

Fax 215-884-0418

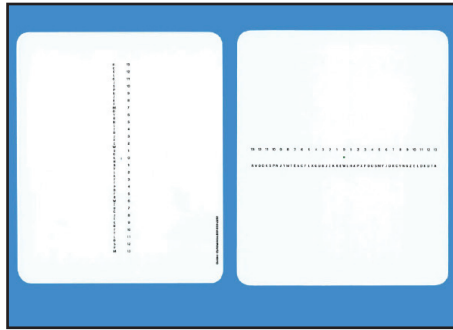
e-mail: info@guldenophthalmics.com

www.guldenophthalmics.com

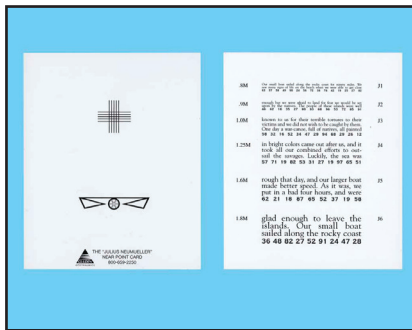
02/18/2013

Test Cards

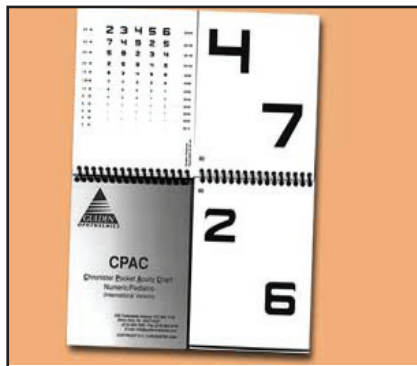
Gulden Ophthalmics



Modified Thorington Test Card
15111 \$9



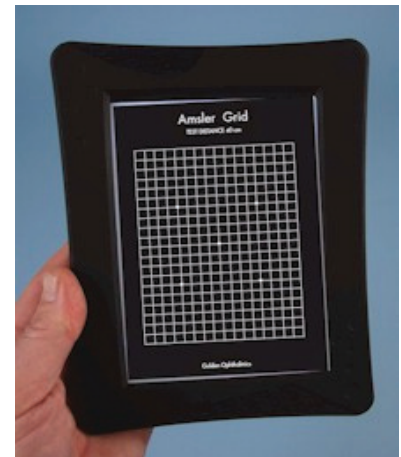
Neumueller Card
15122 \$9



**Pediatric Chronister
Pocket Acuity Chart**
15131 \$30



Near Point Card Set
15303 \$13



Illuminated Amsler Grid Card

■ This high tech card is the last card you will need to buy.

15232 \$79

Insert

15432 \$15

225 Cadwalader Avenue
Elkins Park, PA 19027-2020

215-884-8105

Fax 215-884-0418

e-mail: info@guldenophthalmics.com

www.guldenophthalmics.com

02/19/2013

Test Cards



Rod Adaptor
15250 \$10



Illuminated Near Letter Card
15233 \$79.00
Insert 15433 \$15



Illuminated Near Number Card
15231 \$79
Insert 15431 \$15



Illuminated Landot 'C' Card
15238 \$79
Insert 15438 \$15



Illuminated Near E Card
15237 \$79
Insert 15437 \$15



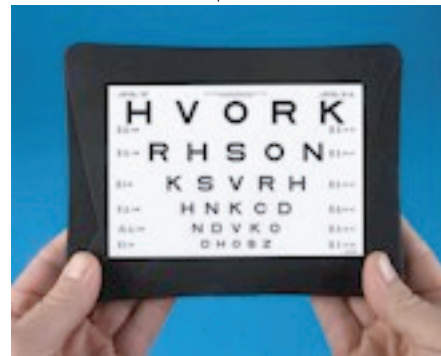
Illuminated Lea Symbol Card
15234 \$79
Insert 15434 \$15



Illuminated Near Letter Card
15239 \$79
Insert 15439 \$15



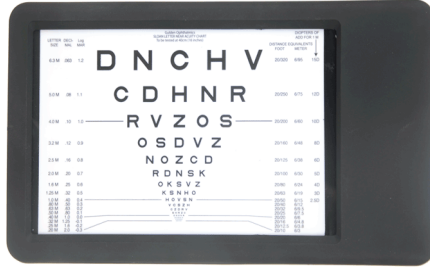
Illuminated 3m Number Card
15236 \$79
Insert 15436 \$15



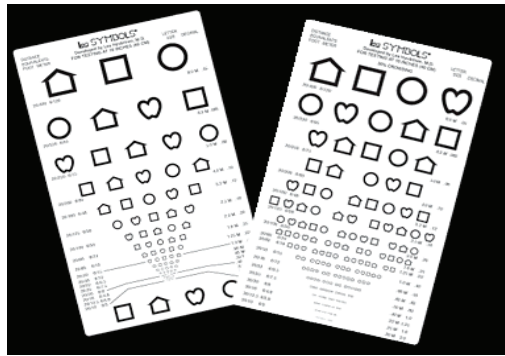
Illuminated 3m Letter Card
15235 \$79
Insert 15435 \$15

Test Cards

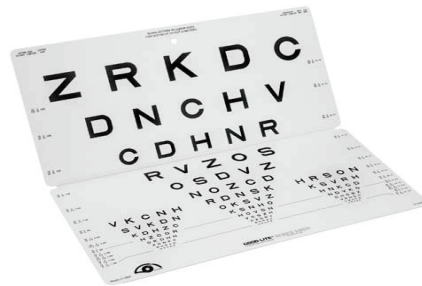
Gulden
Ophthalmics



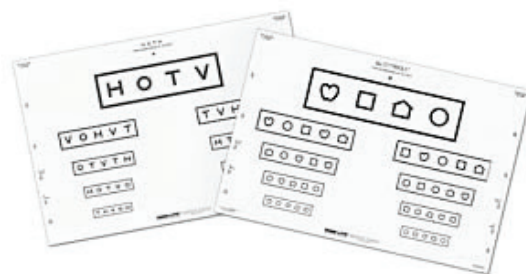
2 Sided Illuminated Near Card
15260 \$99.00



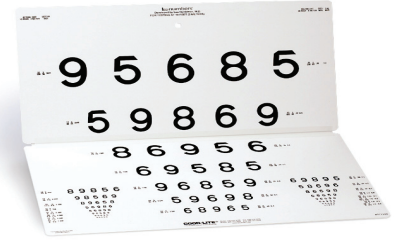
Lea Symbols Card
15340 \$13



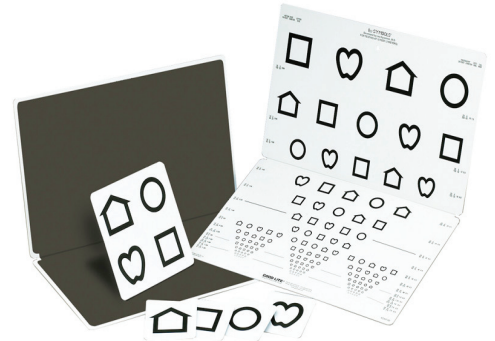
Sloan Letters Folding Chart
15341 \$53



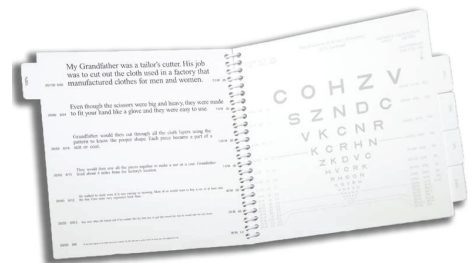
Lea Symbols & HOTV Screening Chart
15342 \$32



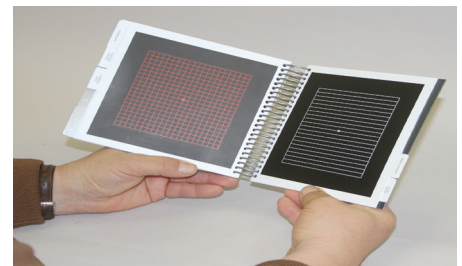
Lea Numbers Folding Chart
15343 \$53



Lea Symbols Folding Chart
15344 \$63



Adult Near-Contrast Test Booklet
15361 \$147



Amsler Grid Book
15362 \$63

225 Cadwalader Avenue
Elkins Park, PA 19027-2020
215-884-8105
Fax 215-884-0418

e-mail: info@guldenophthalmics.com
www.guldenophthalmics.com

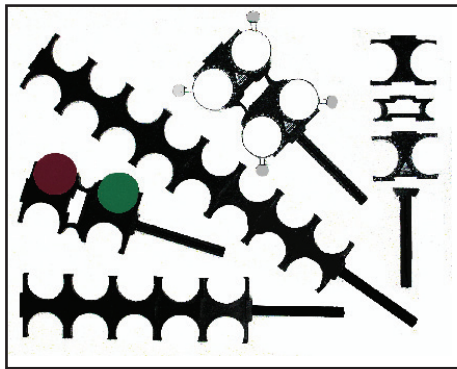
2/19/2013

Trial Lenses / Flippers



Maddox Trial Lens w.handle

11137	\$11.00 (White)
11136	\$11.00 (Red)



Lens Holders

15142	Lens Holder	\$6
15143	Lens Holder w/axis	\$7
15141	Nose Bridge	\$6
15140	Handle	\$6
15144	4 Well	\$22
15145	8 Well	\$33
12301	38 mm Red/Green Maddox	\$26
	(lenses not included)	



Jackson Crossed Cylinder

■ Set of two		
+0.25 and +0.50		
11133		\$29.00
+0.75 and +1.00		
11134		\$29.00



Color Flipper Set

■ Six Standard Powers	
■ Color Coded	
■ Easy to Identify Power	
■ Attractive Stand	
11123	\$139
Stand only	
11122	\$15



Flippers

11132 (4 lens)	\$25.00
----------------	---------



Raff Level Trial Flipper

■ Balance prescriptions with a level to eliminate off axis rotation	
■ Use to balance cylinder and prismatic corrections	
■ Quick and easy to use	
15156	\$39.00

Trial Lenses / Flippers



Universal Trial Frame

- Holds 3 lenses i front and 1 lens behind the frame
- PD range 24mm 40mm on each side
- Fully adjustable

11151 \$135.00



Universal Trial Frame LW

- Holds 3 lenses i front and 1 lens behind the frame
- PD range 27mm 33mm on each side
- Fully adjustable

11152 \$135.00



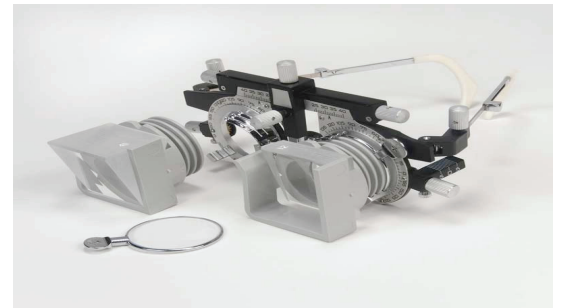
Pediatric Trial Frames

11154 \$79.00



Child Trial Frame

11153 \$45.00



Prism Adapter

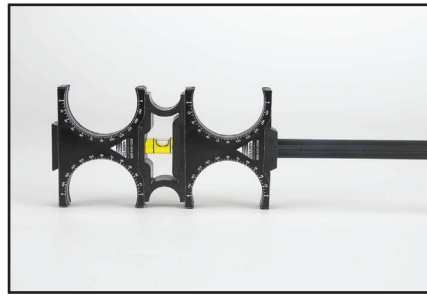
11155 \$65.00



Opto Clip

15323 \$49.00

Trial Lenses / Flippers



Raff Level Trial Flipper

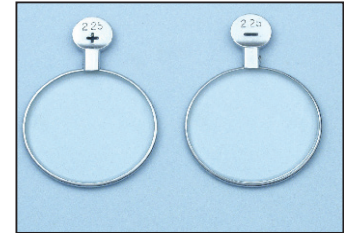
- Balance prescriptions with a level to eliminate off axis rotation
- Eliminates costly remakes with a more accurate trial lens presentation
- Inspire patient confidence by providing a positive visual experience
- Use to balance cylinder and prismatic corrections
- Quick and easy to use
- Great for periatric and nursing home use

15156 \$39.00



Trial Lens Multi-Pinhole Occluder

15104 \$5



Replacement Trial Lens

- High Quality
- Chrome Finish
- Spheres, cylinders & prisms

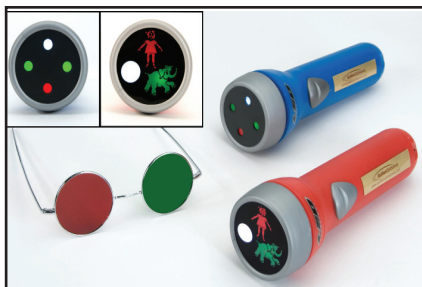
11150 \$10



Polarized Trial Lens

11149 \$30

Vision Screening Tools



LED Worth Four Dot Test

LED Three Character Test

- 3 bright white LED's never need replacing
- Virtually unbreakable
- Uses less energy, batteries last longer
- Reversible Red & Green Spectacles

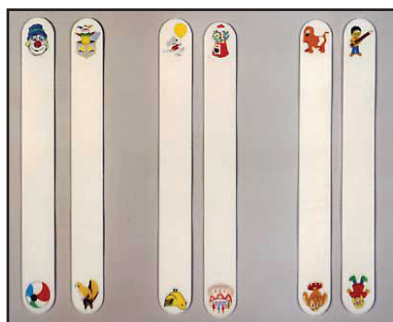
15304 \$40

15305 \$45



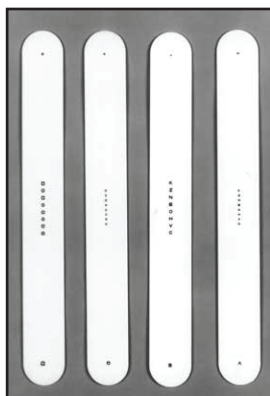
Pediatric Fixation Pack

15132 \$20.00



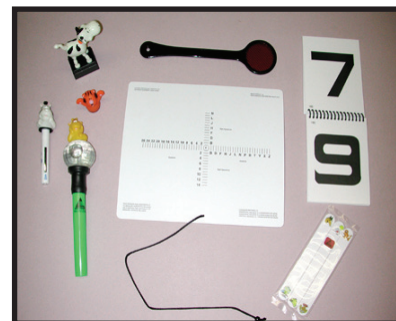
Pediatric Fixation Sticks

15314 \$16.00



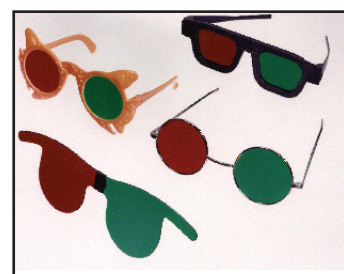
Fixation Sticks

15302 4 Pack \$22.00



Pediatric Screening Kit

15311 \$89.00



Red & Green Specs

- Easiest of all to use
- Accurate canceling colors
- Will not fall off patient

15105 Reversible Metal Frame \$19

15320 Black Frame (6 pack) \$30

15321 Pediatric (6 pack) \$30



Red & Green Wrap Around Glasses

- No side light interference
- Stylish attractive design

Adult
15316 \$16

Child
15317 \$15

Vision Screening Tools

Gulden Ophthalmics



Maddox Phoria Measure

12136

\$79.00



Tangent Screen

11200

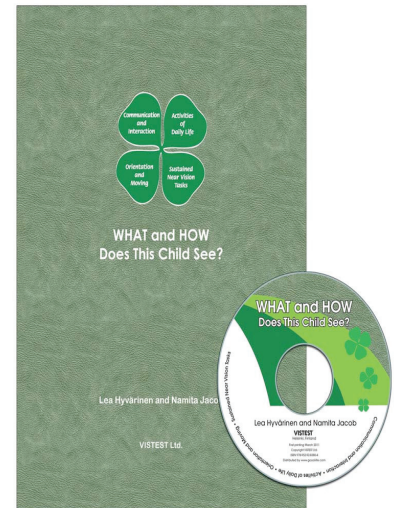
\$150.00



Optokinetic Drum

15360

\$135.00



What and How CD and Book

15346

\$99.00

225 Cadwalader Avenue
Elkins Park, PA 19027-2020
215-884-8105

Fax 215-884-0418

e-mail: info@guldenophthalmics.com

www.guldenophthalmics.com

02/20/2013