

2015 CATALOG



225 Cadwalader Avenue
Elkins Park, PA 19027-2020
215-884-8105
Fax 215-884-0418
e-mail: info@guldenophthalmics.com
www.guldenophthalmics.com

COLOR VISION



HRR Pseudoisochromatic Plates

- Congenital and Acquired Testing

15251 - \$250.00



Ishihara 14 Plate Book

15177 - \$145.00

Ishihara 24 Plate Book

15121 - \$189.00

Ishihara 38 Plate Book

15125 - \$210.00



Magnetic Color Vision Tests

- Munsell Color System
- Includes "C" Daylight Glasses
- Easy to use Magnetic Wand

Magnetic Farnsworth Dichotomous D-15

15106 - \$199.00

Magnetic Lanthony Desaturated D-15

15107 - \$199.00

Magnetic Combination D-15 Color Test

15108 - \$369.00



"C" Daylight Glasses™

- Corrects Normal Incandescent Light to Daylight Illumination
- Precise Type "C" Illumination
- Provides Accurate Color Test Results
- Compatible with All Color Test

15115 - \$45.00

225 Cadwalader Avenue
Elkins Park, PA 19027-2020
215-884-8105

Fax 215-884-0418

e-mail: info@guldenophthalmics.com
www.guldenophthalmics.com

COLOR VISION



Farnsworth Lantern Flashlight

- 9 Interchangeable Filters
- Accurate
- Inexpensive Substitute
- Portable

15171 - \$199.00



Farnsworth Dichotomous D-15 Lanthony Desaturated D-15

- Munsell Color System
- Quick and Easy to remove
- Includes "C" Daylight Glasses

Farnsworth 15126 - \$159.00

Lanthony 15127 - \$159.00

Combo D-15 Color Test

Farnsworth / Lanthony 15130 - \$299.00

225 Cadwalader Avenue
Elkins Park, PA 19027-2020

215-884-8105

Fax 215-884-0418

e-mail: info@guldenophthalmics.com

www.guldenophthalmics.com

Eye Conformers / Spheres / Shields



PMMA Eye Spheres – (Sterile)

- 14250 – 10mm \$54.00
- 14251 – 12mm \$54.00
- 14252 – 14mm \$54.00
- 14253 – 16mm \$54.00
- 14254 – 18mm \$54.00
- 14255 – 20mm \$54.00
- 14256 – 22mm \$54.00



PMMA Eye Conformers – (Sterile)

- 14264 – Small No Holes \$54.00
- 14265 – Medium No Holes \$54.00
- 14266 – Large No Holes \$54.00
- 14267 – Small with Holes \$63.00
- 14268 – Medium with Holes \$63.00
- 14269 – Large with Holes \$63.00



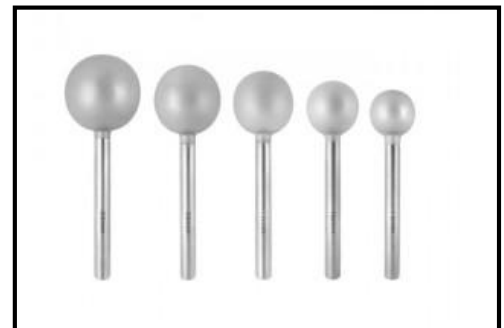
Silicone Eye Spheres – (Non-Sterile)

- 14351 – 12mm \$42.00
- 14352 – 14mm \$42.00
- 14353 – 16mm \$42.00
- 14354 – 18mm \$42.00
- 14355 – 20mm \$42.00
- 14356 – 22mm \$42.00



PMMA Orbital Implant Sizer Kit Disposable (Non-Sterile)

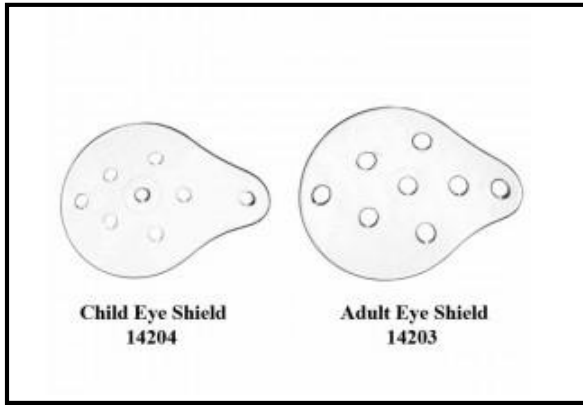
- 14170 – 14, 16, 18, 20mm Set \$49.00



Stainless Steel Orbital Implant Sizer Kit Reusable Autoclavable (Non-Sterile)

- 14171 – 14, 16, 18, 20, 22mm Set \$349.00

Eye Conformers / Spheres / Shields



Polycarbonate Eye Shields

- Shatterproof Polycarbonate Plastic

14203 – Adult 12 Pack \$40.00

14204 – Child 12 Pack \$40.00



Foam Lined Eye Patch Shield

- Soft Lined Foam Latex Free

15364 – \$9.00

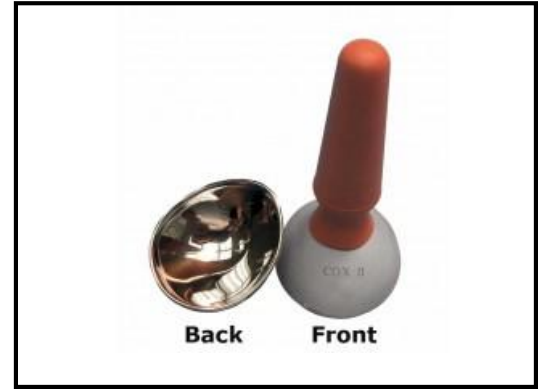


Dual Foam Lined Eye Shields

- Soft Lined Foam Latex Free
- Comfortable Adjustable Headband
- Shatterproof Polycarbonate Plastic

14102 – \$7.00

14103 – 12 Pack \$44.00



Cox II Laser Eye Shields

- For Protection of the Patient / Personnel
- Non-reflective Surfaces Disperse Laser Light
- Used for Skin Resurfacing or Incision Procedures

21261 – Extra Small \$115.00

21262 – Small \$115.00

21263 – Medium \$115.00

21266 – Large \$115.00



Autoclavable Ocular Shields

23204 – \$70.00



Durette III External Eye Laser Shields

- Includes 1 assembled pair of external shields and extras. Total parts comprise of 2 metal cups, 4 nasal & 4 temporal plastic attachments, 2 elastic headbands and a medium plastic sterilizing tray

21445 – \$299.00

Eye Conformers / Spheres / Shields



Durette IV External Eye Laser Shields

- Includes 1 assembled pair of external shields and extras. Total parts comprise of 2 metal cups, 2 nasal & 2 temporal metal attachments, 2 elastic headbands and a medium plastic sterilizing tray

21555 – \$299.00



Symblypharon Rings

- The Symblypharon Rings prevent adhesions and shortening or retraction of the fornices and cul-de-sacs without touching the cornea

14345 – Small \$75.00

14346 – Medium \$75.00

14347 – Large \$75.00



Suction Cups

- Traditional large red suction cups for extracting conformers and laser shields

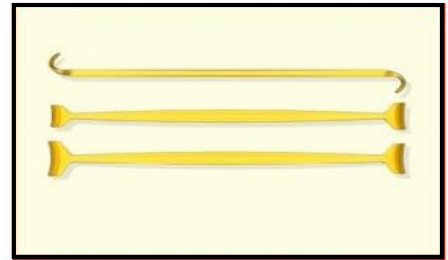
23012 – 12 Pack \$35.00



Durette Plastic Eye Goggles

- Used with light that is usually created by fluorescent lamps, bright LEDs or diachronic filament bulbs. Visible violet light in the range of 405-420

23442 – \$79.00



Autoclavable Desmarres Lid Retractor

- Desmarres Lid Retractor used for retracting eye lids
- Yellow color makes them easy to locate and see through

23311 – \$49.00



Jaeger Lid Plate

- Acrylic jaeger lid plate, concaved with small & medium ends 22 – 25mm

16102 – \$20.00



Autoclavable Jaeger Lid Plate

- Autoclavable jaeger lid plate in yellow color for easy locating and see through

23293 – \$49.00

Consumables



Chinrest Paper

- 1-3/4 x 5-1/8

15326 – 500 Pack \$7.00



Fluorescein Glo Strips

- 1 mg sterile strips
- Lint free rounded tips

152F5 – 300 Pack \$32.00



Schirmer Tear Flow Strips

- Printed mm scale
- Sterile strips

152T5 – 100 Pack \$13.00

225 Cadwalader Avenue
Elkins Park, PA 19027-2020

215-884-8105

Fax 215-884-0418

e-mail: info@guldenophthalmics.com

www.guldenophthalmics.com

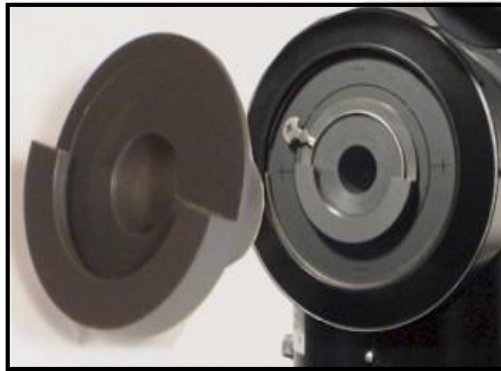
Contact Lens



Contact Lens Check & Keratometer Calibrator

- Easily mounts on most keratometers & Slit Lamps
- Eliminates a need for a radiuscope
- Check for warpage or any changes to the base curve & calibrate your keratometer

15179 - \$49.00



Keratometer Range Extender

- Extends range; flatter to 30.87D or steeper to 60.62D.
- Attaches easily for temporary or permanent use
- Eliminates bothersome taping & alignment of lenses

15180 - \$40.00



Contact Lens Polisher Kit

- Cordless & easy to use
- Fits comfortably in your hand
- 1,400 rpm motor saves time
- Includes flat and cone shaped foam polishing pads

15172 - \$99.00

Diagnostics



Automated Confrontation Test

- Automated LED gross confrontational visual field tester
- Fast and accurate
- Both eyes can be tested in less than a minute

17002 - \$199.00



Eye View™ Visualizing Scope

- Gives patients a fascinating view of floaters and cataract opacity in their eyes
- Good educational tool
- Easy to use

15220 - \$39.00



Dual Luedde Exophthalmometer

- Small compact size
- Hard shell case included

16103 - \$125.00



R-50 Near Point Accommodation Rule

- Easy to read
- Includes acuity cards
- Durable

15150 - \$69.00

Accommodation Cards (5 Pack)

15201 - \$15.00



Luedde Exophthalmometer

- Pocket size
- Accurate parallax correction
- Protective leather case included

16104 - \$30.00

Diagnosics



Neutral Density Bar

- Six standard ND levels
- Convenient "prism bar" format
- Compact, slides into pocket
- Quantifies APD accurately

15118 - \$60.00



Stereo Acuity Test

- Includes adult and pediatric polarized viewers
- Graded circle test from 400 sec to 20 sec
- Very precise
- Answer key on back cover

15211 – Fly \$180.00

15219 – Butterfly \$180.00



Wraparound Polarized Glasses

- Adult and child sizes
- Used with the stereo fly and Butterfly tests

15199 – Child \$15.00

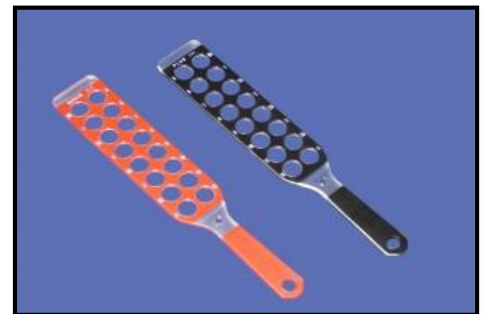
15200 – Adult \$16.00



Retinoscopy Racks w/ Compass

- High quality lenses
- Plus (+) and minus (-) lenses
- Axis Compass

15160 - \$129.00



Retinoscopy Racks

- High quality lenses
- Plus (+) and minus (-) lenses

15161 - \$115.00



Large Aperture Retinoscopy Racks

- High quality lenses
- Plus (+) and minus (-) lenses
- 6 piece set

15162 - \$89.00

Diagnostics



Digital PD Ruler

- Accurate and responsive digital display
- Automatic shut off when placed on level surface

17005 - \$129.00



Digital Pupilmeter w/ Vertex Distance

- Measures binocular and monocular pupillary distance (PD)
- Automatic standby

17006 - \$249.00



Reusable Penlight

- 2 "AAA" batteries included

15116 - \$4.00



Diagnostic Eye Template

- Individual eye components for patient education

15178 - \$8.00



Slit Lamp Yellow Filter

- Used to detect subtle staining
- Better visualization of RGP fluorescein patterns

15192 - \$49.00



Large Neutral Density Bar

- Six standard ND levels
- Convenient "prism bar" format
- Lighter than competitor versions
- Quantifies APD accurately

15117 - \$85.00

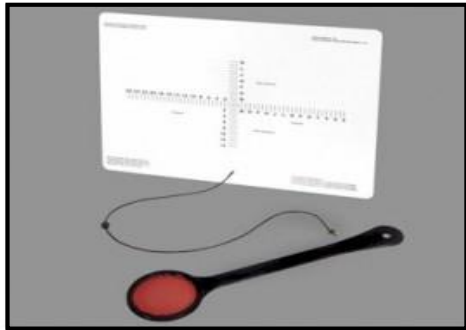
Diagnostics



Plastic Tape Measure

- Light weight, pocket size
- Spring retractable

16105 - \$5.00



Eye Alignment Near Card

- Quantitative test
- Measures vertical & horizontal deviation
- Portable & easy to use
- Maddox included

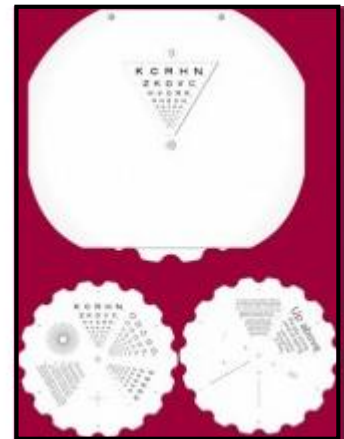
15114- \$30.00



Ohlson VSEF

- The yellow filter increases the visibility of the fluorescein pattern
- The red lens increases the visibility of lissamine green staining on the bulbar conjunctiva

12135 - \$49.00



Phoropter Roto Chart

- Astigmatic Wheel
- English & Spanish continuous text
- Cross Hatch target

15151 - \$49.00

225 Cadwalader Avenue
Elkins Park, PA 19027-2020
215-884-8105
Fax 215-884-0418

e-mail: info@guldenophthalmics.com
www.guldenophthalmics.com

Drop Trays / Organizers



Disposable Spray Caps

- Replaceable caps for standard ophthalmic drop bottles
- Use for Mydriatic, Anesthetic, etc

15195 - 12 Pack \$22.00



Strip Caddy/Disposal Kit

- Convenient & safe way to dispose strips
- Small compact design saves space
- Strips and disposable bags included

15205 - \$45.00



Opticare Eye Drop Dispenser

- Helps patients use their eye drops effectively
- Holds the eye lid open
- Available in 5 colors

15196- \$22.00



Tip Cleaner Caddy

- Quickly disinfects tonometer tips
- Removable, refillable cup
- Easily maintained by a technician
- Keeps drops organized

15169- \$29.00



Caddy 6

- Keeps drops organized
- Rear key holes for wall mounting
- Measures 3"x5"x1"

15168- \$17.00



Opticare Eye Drop Dispenser (10 Pack) Display

- Great counter display

15197- 10 Pack \$197.00

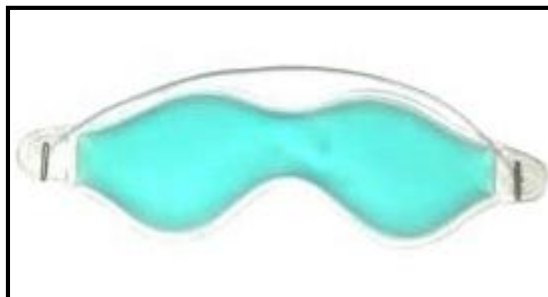
Drop Trays / Organizers



Lagophthalmos Kit

- Kit includes moisture goggles for day
- Headband device to keep eye/eyes closed at night
- Eliminates the need for taping
- Storage case included

15170 - \$32.00



Gel Eye Mask 2 Pack

- Easy to heat or cool
- Soothes tired eyes

14225 – 2 Pack \$13.00



Lasik Eye Guard

- Very comfortable, adjustable
- Anti-fog ventilation holes
- Logo imprinting available

15124 – 10 Pack \$69.00



Beaded Gel Eye Mask

- Use as Hot or Cold
- Soothes tired eyes

14222 – \$12.00

GuldenOphthalmics

225 Cadwalader Avenue
Elkins Park, PA 19027-2020

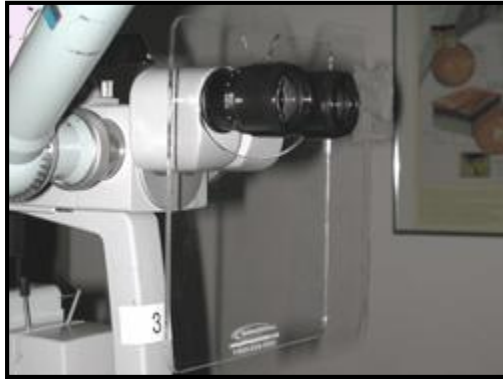
215-884-8105

Fax 215-884-0418

e-mail: info@guldenophthalmics.com

www.guldenophthalmics.com

Instruments & Accessories



Slit Lamp Breath Shield

- Protect yourself and your patients from respiratory illness
- Easy to install
- Fits most Slit Lamps

14226 - \$28.00



MG Expressor Kit

- Performed easily on outer lid with or without slit lamp
- Immediate patient relief post procedure
- Includes 2 gel eye masks, lid plate tool, expressor roller tool & 10 disposable expressor covers

16111 - \$139.00

Roller Covers

16C11 - \$10.00 (25 Pack)



Curved Locking Tweezers

- Has two slots for holding punctum plugs

16117 - \$79.00



Slit Lamp Elbow Rest

- Keeps users arm & hand steady for holding lenses and filters
- Elevates from 9 to 14.5 cm
- Twist to lock position

15194- \$39.00



Gutierrez MG Expressor Lid Plate PLUS

- Comfortable for the doctor in a natural position when expressing the meibomian glands
- 30mm scale used to measure pupil size, iris diameter and other measurements

16P11 - \$15.00

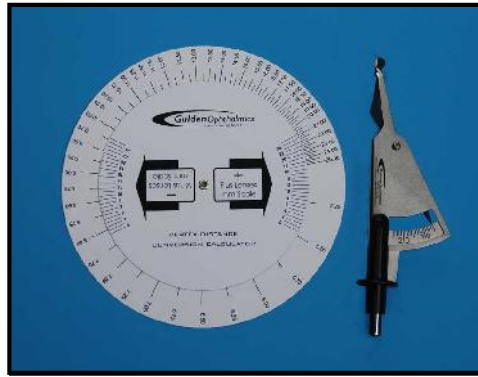


Gutierrez MG Expressor Lid Plate S.S.

- Comfortable for the doctor in a natural position when expressing the meibomian glands
- Can be sterilized in a autoclave

16S11 - \$59.00

Instruments & Accessories



Distometer Set

- Used to accurately measure the vertex distance between the patient's cornea and the lenses in eyeglasses or trial frames
- Metal distometer
- Conversion calculator disc

16127 - \$99.00



Cataract / IOL Model Lens Stabilizer

- Used to help stabilize the cataract or IOL lenses from falling when moving the model often
- Easily slides over models post
- Made of a clear acrylic

15263 - \$15.00



Cornea Model Lens Stabilizer

- Used to help stabilize the cornea lenses from falling when moving the model often
- Easily slides over models post
- Made of a clear acrylic

15264 - \$15.00



Spec-Deck

- Provides convenient protection for patient's eyeglasses at the slit lamp
- Special non slip silicone pad
- Secure 3M dual lock fasteners
- Available in three colors

15240 Beige - \$15.00

15241 Grey - \$15.00

15242 White - \$15.00

225 Cadwalader Avenue
Elkins Park, PA 19027-2020

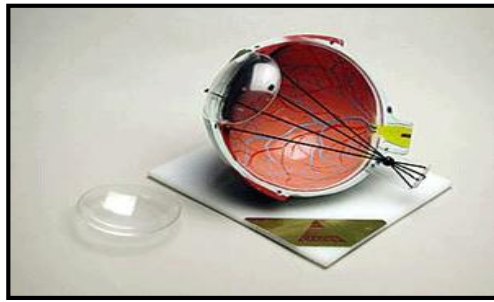
215-884-8105

Fax 215-884-0418

e-mail: info@guldenophthalmics.com

www.guldenophthalmics.com

Models



Astigmatism Eye Model

- Demonstrates Astigmatism
- Myopia
- Hyperopia
- Refraction error

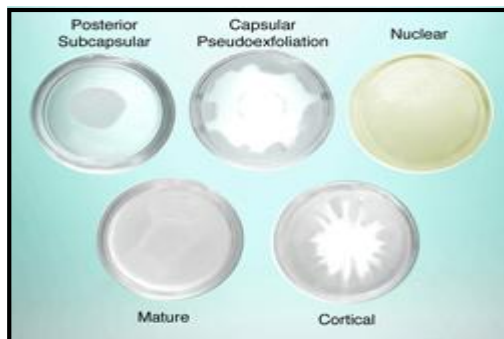
15123 - \$99.00



Cataract Eye Model

- Includes 5 interchangeable lenses
- Subcapsular
- Capsular
- Mature
- Cortical
- Nuclear

15129 - \$99.00



Cataract Lenses

- Includes 5 interchangeable lenses
- Subcapsular
- Capsular
- Mature
- Cortical
- Nuclear

15119 - \$49.00



Cornea Model

- Includes 5 interchangeable corneas
- Keratoconus
- Bullous Keratopathy
- Fuch's Endothelial Dystrophy
- Recurrent Corneal Erosion
- Normal

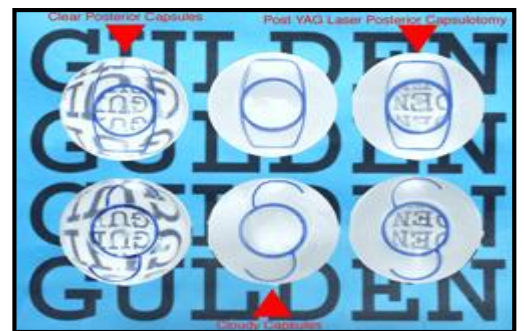
15182 - \$99.00



IOL Eye Model

- Includes 6 interchangeable corneas
- IOL and Toric implants of clear posterior capsule, cloudy capsule & post YAG posterior capsulotomy

15149 - \$99.00



IOL Lenses

- IOL and Toric implants of clear posterior capsule, cloudy capsule & post YAG posterior capsulotomy

15147 - \$49.00

225 Codwalder Avenue
Elkins Park, PA 19027-2020

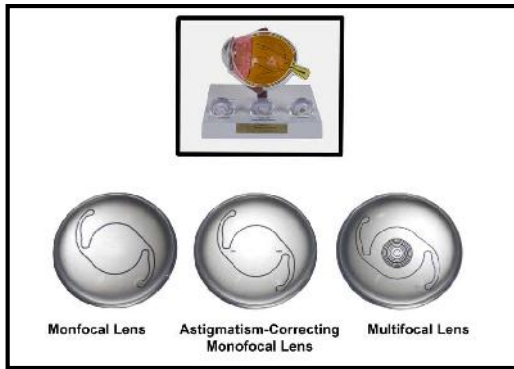
215-884-8105

Fax 215-884-0418

e-mail: info@guldenophthalmics.com

www.guldenophthalmics.com

Models



Premium IOL Options Set

- Helps educate patients on today's IOL options.
- Set of 3 interchangeable lenses, monofocal, astigmatism-correcting monofocal, and multifocal.

15148 - \$29.00



Complete Eye Model

- Provides a unique opportunity to demonstrate myopia and hyperopia through adjustment of the focal rays
- Helps in educating patients on the anatomy of the human eye

15152 - \$99.00



Punctum Plug/Tear Duct Model

- Shows the Tear Ducts
- Lower duct is open
- Punctum Plug can be inserted

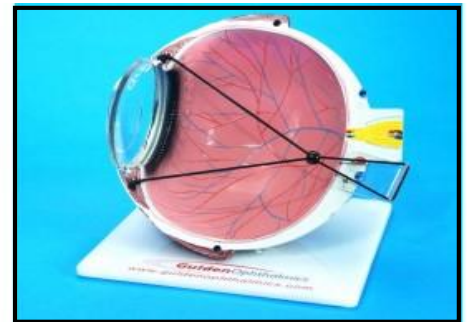
15165 - \$69.00



Small Eye Model

- Assists the ophthalmic professional in educating patients in the anatomy of the human eye

15222 - \$79.00



Lasik Eye Model

- Assists the ophthalmic professional in educating patients about Lasik surgery procedures

15120 - \$99.00



Detachment Eye Model

- Assists the ophthalmic professional in educating patients in the detachment of either the vitreous or the retina

15163 - \$99.00

Models



Siepser Vitreous Floater Demonstrator

- Quickly & easily explain "shadowing"
- Measures 3 inches in diameter

15153 - \$49.00



Siepser Hemorrhage Demonstrator

- Demonstrates the effects of vitreous hemorrhage & head position

15224- \$49.00



Timberlake Training Eye Model

- Improve the teaching of Fundoscopy Skills
- Changeable pupil sizes
- Multiple retinal pathologies

15173 - \$99.00



VTD Model

- AMD
- Diabetic Retinopathy
- Glaucoma

15223 - \$99.00



Diabetic Eye Model

- Demonstrates the effects of diabetes on the kidneys, arteries, nerves & retina

15252 - \$79.00



Schematic Eye

- Ideal for practicing retinoscopy and teaching optical fundamentals
- Holds up to 3 trial lenses

15174 - \$89.00

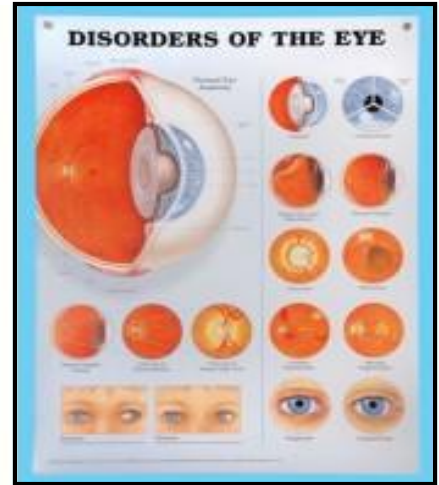
Educational Posters



Eye Poster

- Highly instructive and useful for both patients and office staff
- Measures 20"x 26"

15254 - \$29.00

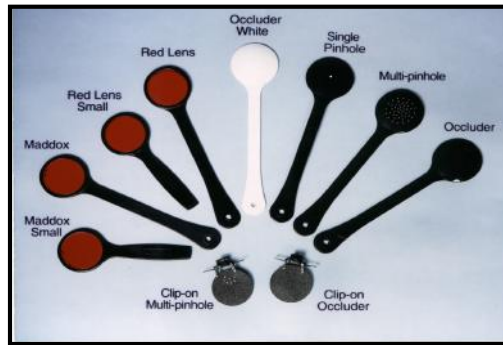


Eye Disorder Poster

- Shows a detailed, clear cross section of the eye
- Measures 20"x 26"

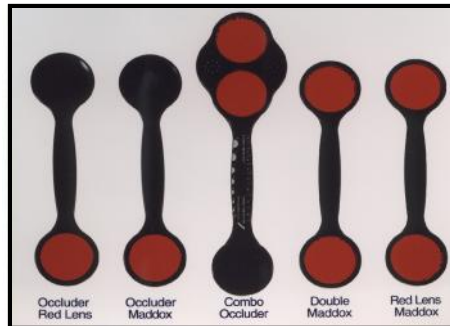
15255 - \$29.00

Occluders



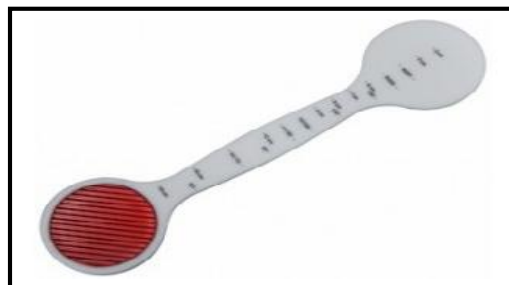
Single Occluders

12110	Occluder Black (short)	\$8.00
12112	Occluder Black (long)	\$9.00
12113	Maddox (long)	\$12.00
12114	Maddox (short)	\$9.00
12115	Red Lens (long)	\$10.00
12116	Red Lens (short)	\$9.00
12117	Occluder White	\$9.00
12127	Clip-on Multiple Pinhole	\$9.00
12128	Clip-on Occluder	\$8.00
12129	Single Pinhole	\$15.00
12130	Multiple Pinhole	\$18.00



Double Occluders

12121	Occluder & Red Lens	\$15.00
12122	Occluder & Maddox	\$17.00
12124	Double Maddox	\$18.00
12125	Maddox Red Lens	\$17.00
12126	Combo Occluder	\$29.00



Lewerenz Accommodation Maddox

- Calibrated scale in both centimeters and dioplers

12137 - \$29.00



Lorgnette Occluder

- Easy to use
- Suitable for any age
- Saves time

12133 - \$19.00



Spielmann Occluder

- For clinic or office
- Eliminates retinal rivalry
- Enhances visual acuity testing

12120 - \$29.00

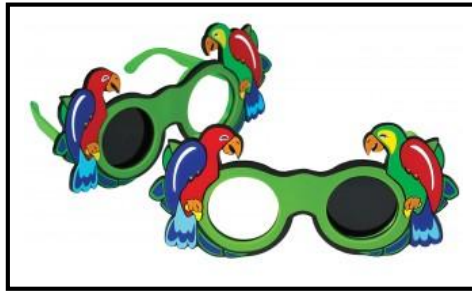


Berens Pinhole Test

- Combines a standard pinhole and an eye dominance test

15102 - \$5.00

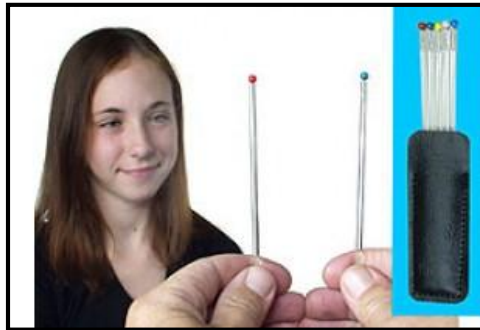
Pediatric Tools



Parrot Opaque Occluder Glasses

- Add some fun to your tests with colorful parrot fun occlude glasses
- Includes 2 glasses 1 left, 1 right

15365 - \$22.00



Color Fixation Sticks

- Test ocular motility
- Test confrontation visual fields
- Case included

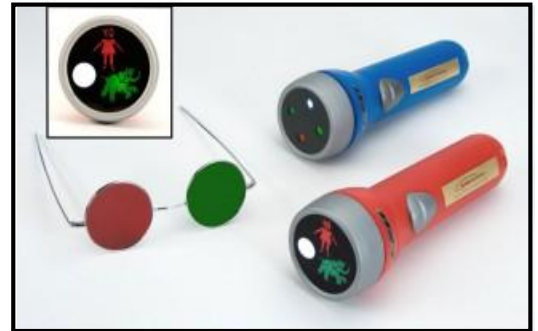
15176 - \$20.00



Brock String

- Used to enhance convergence ability

15133 - \$5.00



LED Three Character Test

- High durable quality
- Reversible red and green glasses
- Batteries included

15305 - \$45.00

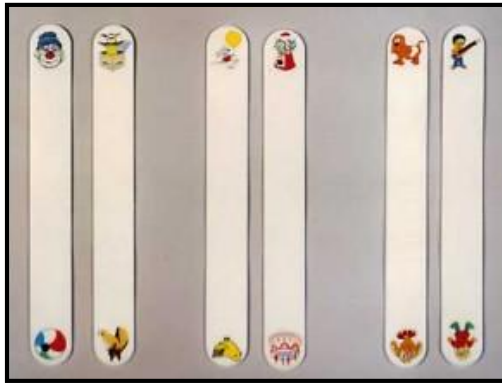


Pediatric Fixation Pack

- Set of four fixation targets
- Perfect for young and non verbal patients
- Penlight included

15132 - \$20.00

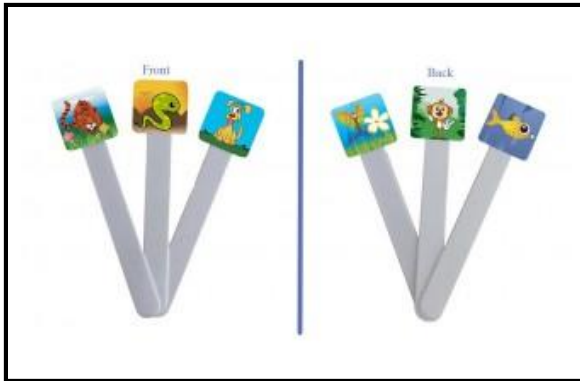
Pediatric Tools



Pediatric Fixation Sticks 3 Pack

- New and improved printed images
- 12 different colored images
- Calibrated for near vision

15314 – 3 Pack \$16.00



Fixi-Stix 3 Pack

- 3D wiggle pictures
- Stimulation targets for the young patient
- Combination of 6 different images

15312 – 3 Pack \$21.00



Pediatric Fixation Wand

- Aids in visual testing and therapeutic situations

15215 – \$10.00



Flashing Butterfly Fixation Stick

- Simulation targets for the young patient
- On / Off button

15203 – \$12.00

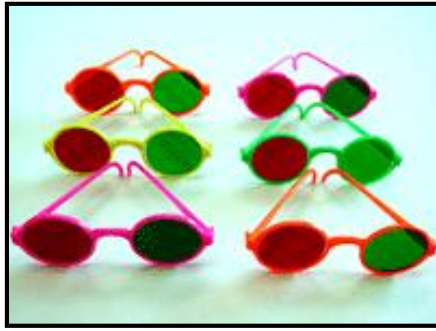


Flashing Fixation Sticks 2 Pack

- Simulation targets for the young patient
- Easy twist on and off
- Replaceable watch battery

15325 – 2 Pack \$20.00

Pediatric Tools



Red and Green Pediatric Glasses

- Used for worth 4 dot and 3 character tests
- Designed for children

15321 – 6 Pack \$30.00



Hopping Accomodative Facility Card (12)

- Vision therapy activities designed for use with accommodative & ocular motor therapies

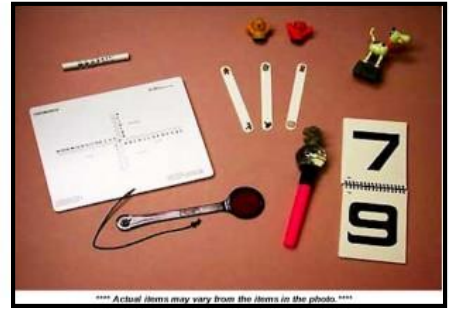
15331 – \$25.00



Amblyopia Rock Cards (Set of 20)

- Reusable with erasable markers
- Comes with instructions and red/green spectacles

15334 - \$39.00



Pediatric Screening Kit

- Includes a eye alignment near card with Maddox rod, pediatric chronister pocket acuity card chart, and pediatric fixation pack with re-useable penlight

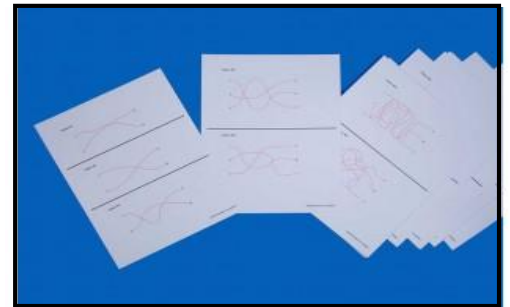
15311 – \$89.00



Red/Green Number Search 1-50 & 1-100 (20)

- Reusable with erasable markers
- Includes instructions and red/green spectacles

15335 - \$39.00

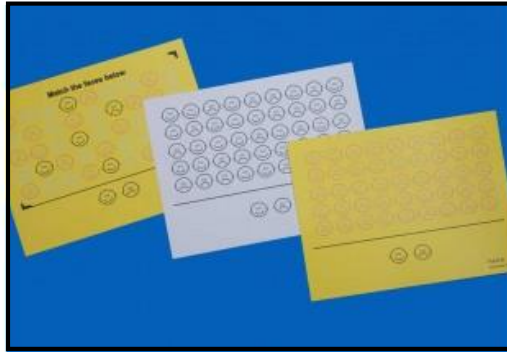


Red Line Tracing Cards (Set of 26)

- Vision therapy activities designed for use with accommodative & ocular motor therapies
- Includes instructions and red/green spectacles

15336 - \$49.00

Pediatric Tools



Face Form (Set of 3)

- Activities are designed to be accommodative demanding & interactive
- All cards are laminated (coated)

15332 - \$9.00



Hopping Vision Therapy Cards

- Complete set of our vision therapy cards shown on page 22 & 23

15330- \$175.00



Amblyo Therapy Game

- Used by vision care professionals for therapy in treating amblyopia
- PC software with three different therapy games

15337- \$99.00



Number Search 1-50 & 1-100 (Set of 20)

- Includes instructions and red/green spectacles
- All cards are laminated (coated)

15333 - \$39.00



Pediatric Chronister Pocket Acuity Chart

- Quick and easy to use
- Laminated & pocket size

15131- \$30.00

Practice Eyes



I-BORG Practice Face

- Realistic shape & dimensions
- Central corneal thickness 0.5mm
- Peripheral corneal thickness 0.8mm

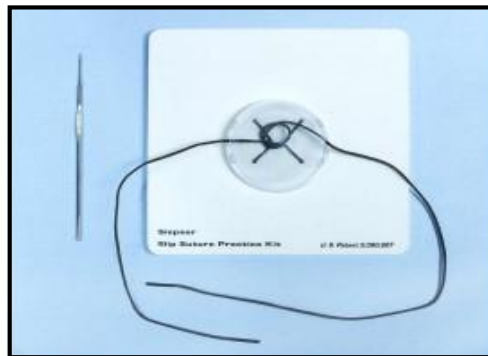
17102 - \$149.00



Phak-I

- Disposable Eyes
- Central corneal thickness 0.5mm
- Peripheral corneal thickness 0.8mm
- 8mm "dilated" pupil

17004 - \$80.00 (4 pack)



Siesper Slit Suture Kit

- Easy to learn
- Includes full instruction CD

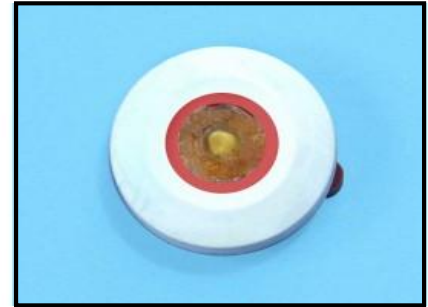
16110 - \$69.00



Phaco Practice Patient

- Includes half head to hold the eyes, a plastic tray to contain the head & liquids & a pair of disposable practice eye

15186 - \$149.00



Phaco Practice Eyes

- Disposable Eyes
- Easily practice the basic steps of phaco surgery

15187 - \$50.00 (10 pack)



Redi-Eye

- Practice indirect Ophthalmoscopy & Photocoagulation
- Slit Lamp attachment
- Replacement retinal films available

15207 - \$159.00

15217 - \$44.00 (10 Pack Films)

Practice Eyes



PPE Normal Retina 2mm Eye

- Realistic shape & dimensions
- Filled with mineral oil
- 2mm “dilated” pupil pathology

17010 – \$140.00



PPE VR Surgery Eye

- Realistic shape & dimensions
- Used to demonstrate equipment and tools to practice VR surgery

17012 – \$250.00



PPE Anterior Chamber Eye

- Realistic shape & dimensions
- Filled with mineral oil
- Anterior chamber pathology

17014 – \$350.00



PPE Normal Retina 8mm Eye

- Realistic shape & dimensions
- Filled with mineral oil
- 8mm “dilated” pupil pathology

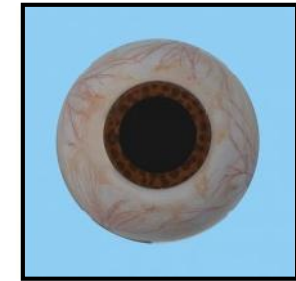
17011 – \$140.00



PPE Diabetic Retinopathy Eye

- Realistic shape & dimensions
- Filled with mineral oil
- Diabetic retinopathy pathology

17013 – \$300.00

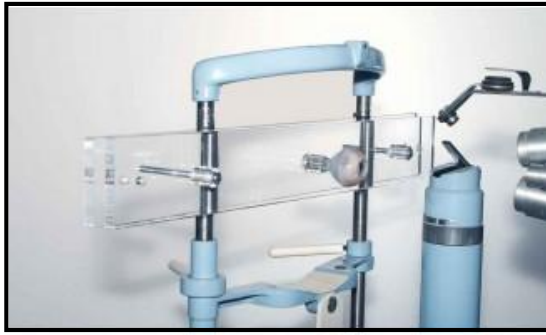


PPE Diabetic Retinopathy Eye

- Realistic shape & dimensions
- Filled with mineral oil
- Retinal detachment pathology

17015 – \$325.00

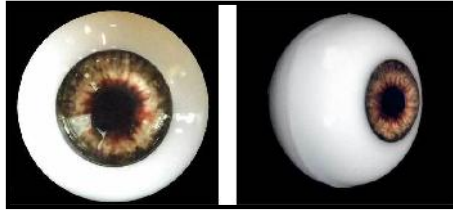
Practice Eyes



PPE Slit Lamp Holder

- Made of high quality acrylic
- Attaches to any slit lamp
- Mounting hardware included

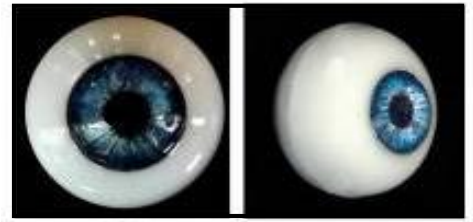
17016 – \$80.00



Silicone Set-up Eye Brown

- Made of Silicone
- Ideal for training and equipment set-up

17017 – \$30.00

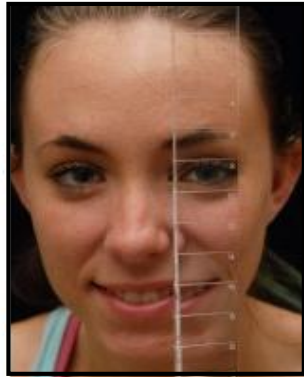


Silicone Set-up Eye Blue

- Made of Silicone
- Ideal for training and equipment set-up

17018 – \$30.00

Prism Bars



EZ View Prism Bars

- Improves vectographic results
- Reduces washout and eliminates reversal
- Diopters in corner viewing plan for easier viewing results
- Includes leather pouch
- Available in vertical or horizontal

11113 – Small Vertical \$95.00

- 0.5-1-1.5-2-2.5-3-3.5-4-5-6-7-8

11116 – Horizontal \$105.00

- 1-2-4-6-8-10-12-14-16-18-20-25-30-35-40-45

11117 – Vertical \$105.00

- 1-2-3-4-5-6-8-10-12-14-16-18-20-25-30



EZ View Prism Bar Sets

- Improves vectographic results
- Reduces washout and eliminates reversal
- Diopters in corner viewing plan for easier viewing results
- Includes 1 horizontal and 1 vertical prism bars
- Horizontal = 1-2-4-6-8-10-12-14-16-18-20-25-30-35-40-45
- Vertical = 1-2-3-4-5-6-8-10-12-14-16-18-20-25-30

11314 – Leather Pouches \$198.00

11L14 – Hard Molded Case \$198.00



LB- Large Prism Bars

- Improves vectographic results
- Reduces washout and eliminates reversal
- Includes leather pouch
- Available in vertical, horizontal, or in a set with both

11111 – Large Vertical \$155.00

- 1-2-3-4-5-6-8-10-12-14-16-18-20-25

11112 – Large Horizontal \$155.00

- 1-2-4-6-8-10-12-14-16-18-20-25-30-35-40

11315 – Horizontal/Vertical \$300.00



Combination Horizontal and Vertical Prism Bar

- Provides accurate measurement of ocular deviation
- Sturdy rails for smooth sliding of the horizontal bar
- Used together or separately
- Includes leather pouch
- Horizontal = 1-2-4-6-8-10-12-14-16-18-20-25-30-35-40-45
- Vertical = 1-2-3-4-5-6-8-10-12-14-16-18-20-25-30

11313 – \$220.00

Prism Sets



S-16 Prism Set

- Solves the problem of birefringence
- Made of high quality plastic
- Includes sizes 1/2-1-2-4-6-8-10-12-15-20-25-30-35-40-45-50 & Red Lens
- Hard molded case

11L16 - \$145.00



S-16U Universal Prism Set

- Solves the problem of birefringence
- Made of high quality plastic
- Includes sizes 1/2-1-2-4-6-8-10-12-15-20-25-30-35-40-45-50 & Red Lens
- Hard molded case

11317 - \$180.00



MS-10 Prism Set with Maddox Rod

- Solves the problem of birefringence
- Includes sizes 1/2-1-2-4-6-8-10-15-20-25 & Maddox rod
- Hard molded case

11310 - \$115.00



S-22 Prism Set

- Solves the problem of birefringence
- Made of high quality plastic
- Includes sizes 1/2-1-2-3-4-5-6-7-8-9-10-12-14-16-18-20-25-30-35-40-45-50 & Red Lens
- Hard molded case

11L22 - \$198.00



S-22U Universal Prism Set

- Solves the problem of birefringence
- Made of high quality plastic
- Includes sizes 1/2-1-2-3-4-5-6-7-8-9-10-12-14-16-18-20-25-30-35-40-45-50 & Red Lens
- Hard molded case

11323 - \$240.00



S-4 Prism Set

- Solves the problem of birefringence
- Includes sizes 5-10-15-20 & Red Lens
- Hard molded case

11304 - \$48.00

Prism Sets



S-8 Prism Set

- Solves the problem of birefringence
- Includes sizes 2 each 5-10-15-20 & 1 red lens
- Made of high quality plastic
- Hard molded case

11308 - \$84.00



SS-8 Prism Set

- Solves the problem of birefringence
- Includes sizes 3-5-8-10-12-15-20-25 & 1 red lens
- Made of high quality plastic
- Hard molded case

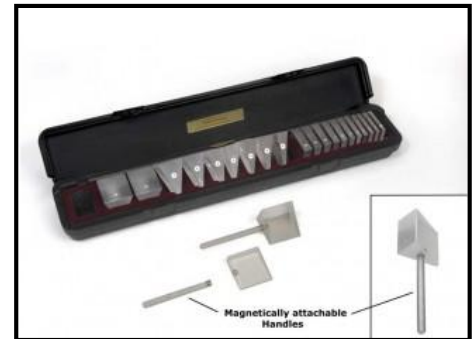
11318 - \$84.00



S-16 Magnetic Stick Prism Set

- Compact case takes up less counter space
- Strong imbedded magnets attach easily to supplied magnetic handles
- Use as stick prisms or individually
- Includes sizes 1/2-1-2-4-6-8-10-12-15-20-25-30-35-40-45-50 Red Lens and two magnetic stick handles
- Additional handles available
- Made of high quality plastic
- Hard molded case

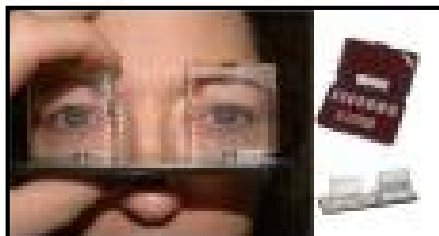
11L17 - \$175.00



S-22 Magnetic Stick Prism Set

- Compact case takes up less counter space
- Strong imbedded magnets attach easily to supplied magnetic handles
- Use as stick prisms or individually
- Includes sizes 1/2-1-2-3-4-5-6-7-8-9-10-12-14-16-18-20-25-30-35-40-45-50 & Red Lens and two magnetic stick handles
- Additional handles available
- Made of high quality plastic
- Hard molded case

11L23 - \$240.00

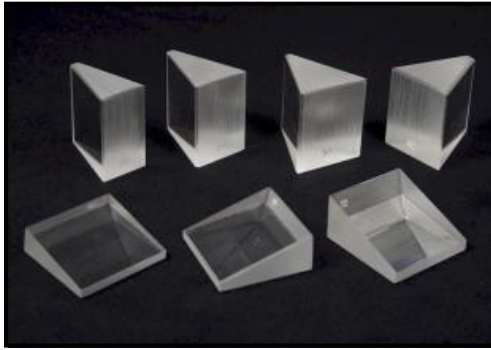


Bishop Alignment Prism Set

- Designed to provide advantages in measuring large angle strabismus
- Includes sizes 1/2-1-2-4-6-8-10-12-15-20-25-30-35-40-45-50 Red Lens

11311 - \$175.00

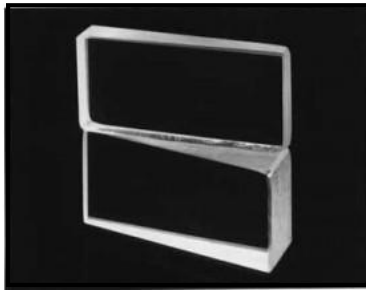
Prisms



Single Square Prisms

- Available sizes include 1/2-1-2-3-4-5-6-7-8-9-10-12-14-15-16-18-20-25-30-35-40-45-50
- Made of high quality plastic

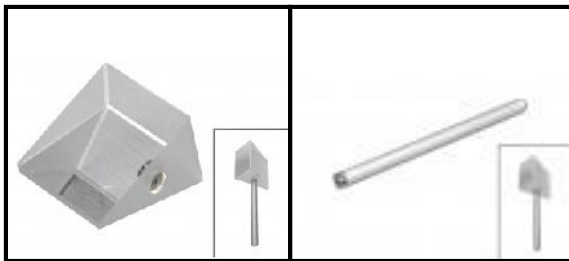
11101 - \$9.00



Single Vergence Facility Prisms

- Used to test for binocular vision disorders and symptoms
- All diopter versions available
- Made of high quality plastic

11107 - \$12.00



Single Magnetic Prisms / Stick Prisms

- Strong imbedded magnets
- Available sizes include 1/2-1-2-3-4-5-6-7-8-9-10-12-14-15-16-18-20-25-30-35-40-45-50
- Made of high quality plastic

11201 – Magnetic Square Prism \$12.00

11202 – Magnetic Stick \$6.00

11204 – Magnetic Stick w/ Prism \$15.00



Single Stick Prisms

- Use for vision therapy
- Available sizes include 1/2-1-2-3-4-5-6-7-8-9-10-12-14-15-16-18-20-25-30-35-40-45-50
- 3 inch plastic handle
- Made of high quality plastic

11104 - \$12.00



Single Vergence Facility Stick Prisms

- Used to test for binocular vision disorders and symptoms
- All diopter versions available
- 3 inch plastic handle
- Made of high quality plastic

11108 - \$14.00



Single Magnetic Vergence Facility Prisms / Stick Prisms

- Strong imbedded magnets
- All diopter versions available
- Made of high quality plastic

11207 – Single VF \$16.00

11208 – VF Stick w/ Prism \$20.00

Surgical Tools



Magnetic Spuds

- Remove foreign bodies with minimal trauma
- Self contained magnetic field

16108 – Ellis \$55.00

16109 – Dix \$55.00



Eye Sphere Introducer

- Helps hold and then place eye spheres in enucleated or eviscerated eye orbits
- Designed for efficient accurate placement

16118 - \$179.00



Small Tono Tip Cleaner

- Quick and easy to use
- Portable

15225 - \$29.00

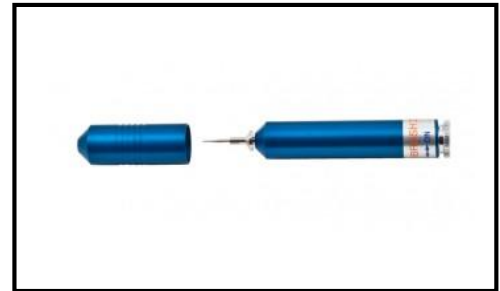


Biro Tonometers

- 26 point check
- U.S certification via AAO specs
- Plunger retractor installation available
- Includes 4 weights

13107 - \$329.00

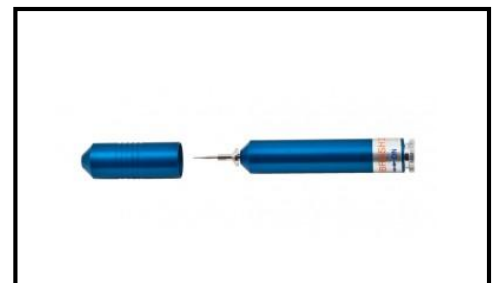
13110 – W/ Allen Modification \$399.00



Algerbrush II Rust Ring Remover .5mm Burr

- Used to remove foreign bodies rust from the eye of a patient
- Low torque motor powered by one single "AA" battery
- Equipped with a 0.5mm burr

16120 - \$65.00



Algerbrush II Rust Ring Remover 1mm Burr

- Used to remove foreign bodies rust from the eye of a patient
- Low torque motor powered by one single "AA" battery
- Equipped with a 1mm burr

16121 - \$65.00

Surgical Tools



Algerbrush Replacement 0.5mm Burr

- Replacement 0.5mm burr for the Algerbrush II

16122 - \$7.00



Algerbrush Replacement 1mm Burr

- Replacement 1mm burr for the Algerbrush II

16123 - \$7.00



Algerbrush II Replacement Chuck

- Replacement chuck for the Algerbrush II

16124 - \$10.00



Algerbrush Chuck w/ 2.5mm Round Fine Diamond Burr

- 2.5mm round fine diamond burr with chuck used with the algerbrush II

16125 - \$59.00



AuroSling

- Used in the surgical procedure for the correction of ptosis
- Comes Sterile

14130 - \$79.00



Aviles Surgical Stabilizer Headrest

- Used to address the issue with patients turning their head during surgery
- Uses two comfortable washable gel pads
- Anchors against the wrist rest
- Adjustable side locking stabilizer

16119 - \$395.00

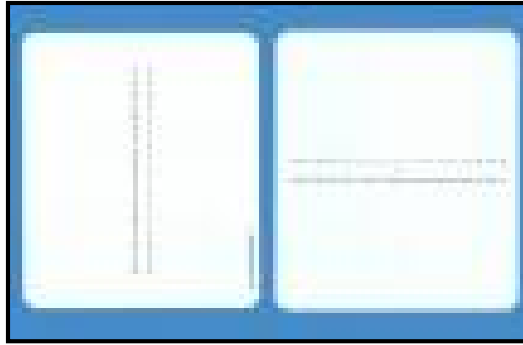
225 Cadwalader Avenue
Elkins Park, PA 19027-2020
215-884-8105

Fax 215-884-0418

e-mail: info@guldenophthalmics.com

www.guldenophthalmics.com

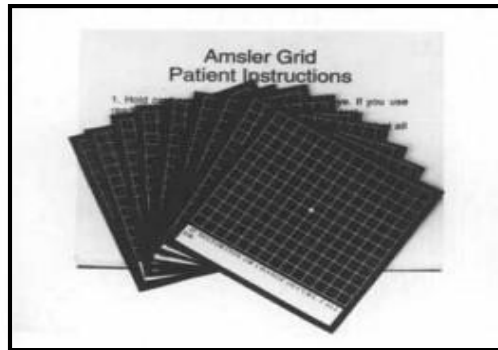
Test Cards



Modified Thorington Test Card

- Used to check the alignment of the eyes
- Helps diagnose uncrossed or crossed diplopia and RhyoP, LhyperP, RhyerP and LhypoP

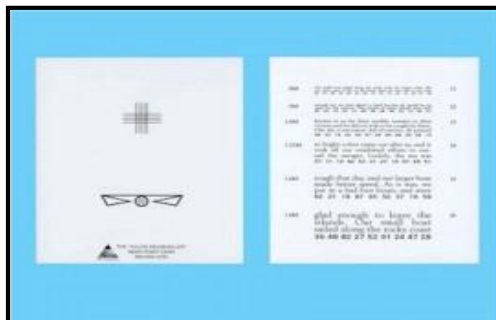
15111 - \$9.00



Magnetic Modified Amsler Grid

- Self administered test for patients
- Valuable tool for detecting central visual field distortion

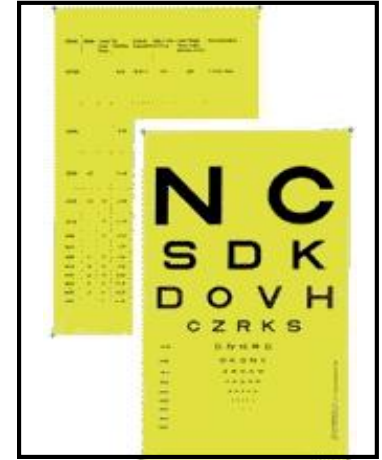
15301 – 10 Pack \$8.00



Neumueller Card

- Print is designed in both “M” & “J” notation
- Print is crisp and sharp to insure quality acuity vision testing

15122 - \$9.00



Eger Equivalent Card

- Includes reversible red & green spectacles
- Highly durable

15134 - \$9.00



Wormington Card

- Used to measure a patients single letter near acuity & reading acuity

15135 – English Version \$7.00

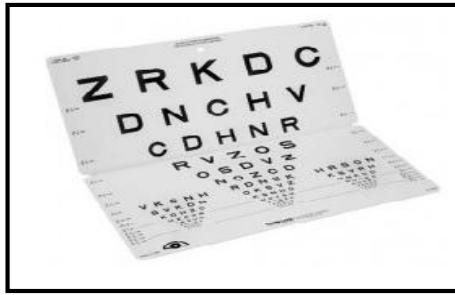


Near Point Card Set

- 2 double side card set

15303 - \$13.00

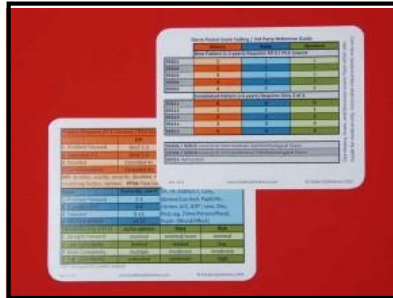
Test Cards



Sloan Letters Folding Chart

- Folding eye chart with sloan letters optotypes
- Center hold for wall hanging
- 10 feet; 3 meter testing distance

15341– \$58.00



Dovie CPT Coding Card

- Pocket sized reference card for CPT and HCPCS coding
- 2mil thick card

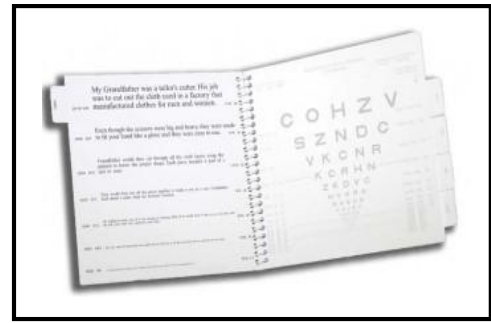
15208 – \$8.00



Dovie Ophthalmic Drug Card

- Pocket sized reference card
- Contains concise information on over 65 most commonly used ophthalmic medications
- 2mil thick card

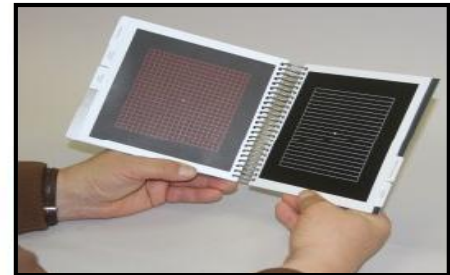
15136 – \$8.00



Adult Near-Contrast Test Booklet

- Provides contrast sensitivity levels of 100,25,10,5 & 2.5 percent using Michelson measures

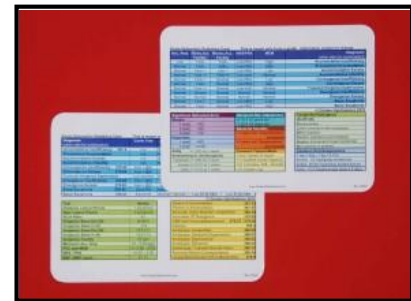
15361– \$162.00



Amsler Grid Book

- Provides 7 Amsler grids and a score sheet

15362 – \$69.00

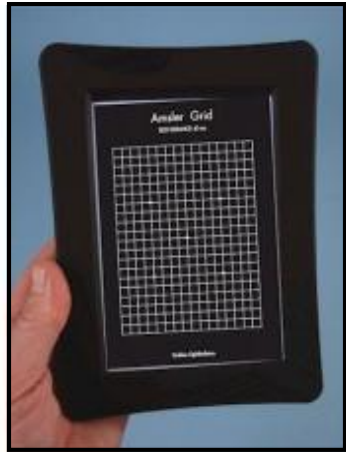


Dovie Peds and Pupil Card

- Pocket sized reference card
- Contains concise information on the 11 most common binocular vision disorders and their associated clinical exam findings
- 2mil thick card

15137 – \$8.00

Illuminated Test Cards



Illuminated Amsler Grid Card

- LED backlit illuminated display
- 5.75" X 3.75" viewing area
- Includes AC power supply and "AAA" battery pack

15232 – \$79.00



Illuminated Landot 'C' Card

- LED backlit illuminated display
- 5.75" X 3.75" viewing area
- Includes AC power supply and "AAA" battery pack

15238 – \$79.00



Illuminated Lea Symbol Card

- LED backlit illuminated display
- 5.75" X 3.75" viewing area
- Includes AC power supply and "AAA" battery pack

15234 – \$79.00



Illuminated Near Sloan Letter Card

- LED backlit illuminated display
- 5.75" X 3.75" viewing area
- Includes AC power supply and "AAA" battery pack

15233 – \$79.00



Illuminated Near Lea Number Card

- LED backlit illuminated display
- 5.75" X 3.75" viewing area
- Includes AC power supply and "AAA" battery pack

15231 – \$79.00



Illuminated Near 'E' Card

- LED backlit illuminated display
- 5.75" X 3.75" viewing area
- Includes AC power supply and "AAA" battery pack

15237 – \$79.00

225 Cadwalader Avenue
Elkins Park, PA 19027-2020

215-884-8105

Fax 215-884-0418

e-mail: info@guldenophthalmics.com

www.guldenophthalmics.com

Illuminated Test Cards

GuldenOphthalmics



Illuminated Near HOTV Letter Card

- LED backlit illuminated display
- 5.75" X 3.75" viewing area
- Includes AC power supply and "AAA" battery pack

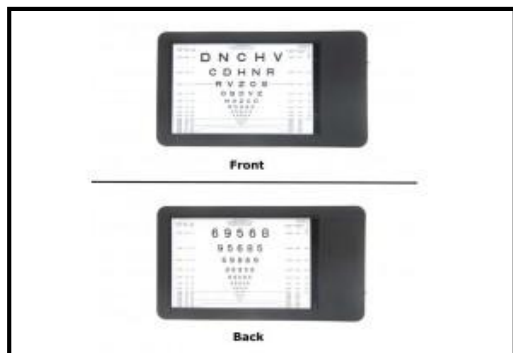
15239 – \$79.00



Illuminated 3m Lea Number Card

- LED backlit illuminated display
- 5.75" X 3.75" viewing area
- Includes AC power supply and "AAA" battery pack

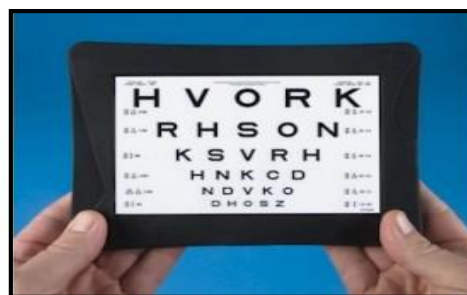
15236 – \$79.00



2 Sided Illuminated Near Card

- 2 Sided LED letters and numbers
- This unit hold 2 cards
- Includes 120v power supply/adaptor that charges the long life lithium battery

15260 – \$99.00



Illuminated 3m Sloan Letter Card

- LED backlit illuminated display
- 5.75" X 3.75" viewing area
- Includes AC power supply and "AAA" battery pack

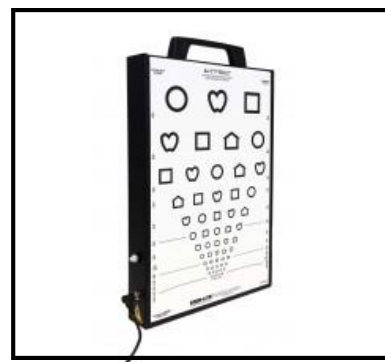
15235 – \$79.00



Illuminated Card Rod Adaptor

- Allows the Illuminated Near Cards to be mounted on most phoropter rods quickly & easily

15250 – \$10.00



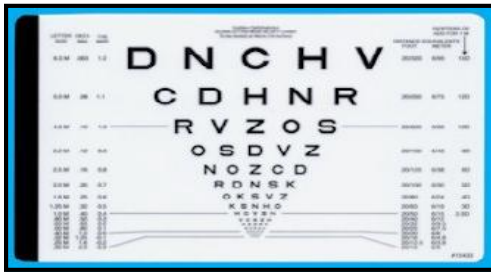
ESV 1200 Illuminated Cabinet

- LED lights illuminate across entire testing surface
- Compatible with a 9" X 14" charts
- CE and CSA listed

15366 – \$235.00

225 Cadwalader Avenue
 Elkins Park, PA 19027-2020
 215-884-8105
 Fax 215-884-0418
 e-mail: info@guldenophthalmics.com
 www.guldenophthalmics.com

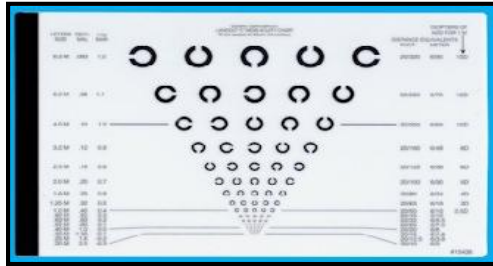
Illuminated Test Card Inserts



Illuminated Near Letter Card Insert

- Replaceable transparent insert for use with the Illuminated Test Card

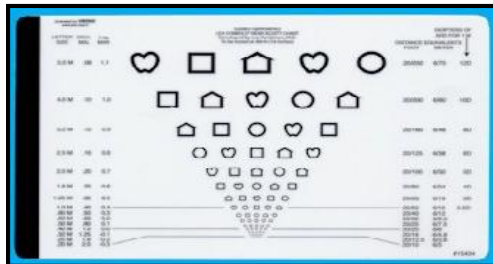
15433 – \$15.00



Illuminated Landot "C" Card Insert

- Replaceable transparent insert for use with the Illuminated Test Card

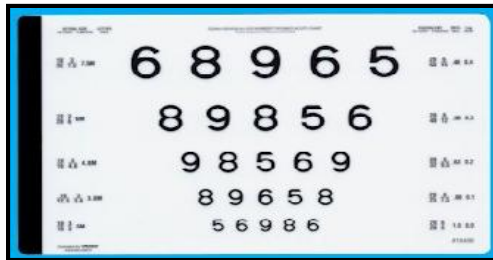
15438 - \$15.00



Illuminated Lea Symbol Card Insert

- Replaceable transparent insert for use with the Illuminated Test Card

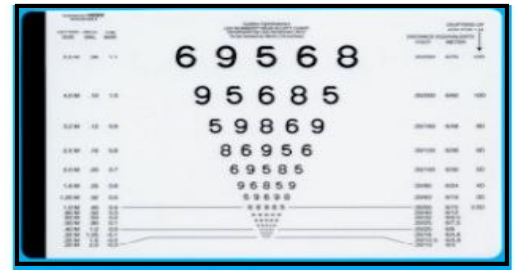
15434 – \$15.00



Illuminated 3m Number Card Insert

- Replaceable transparent insert for use with the Illuminated Test Card

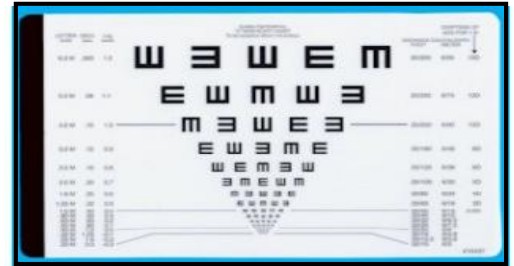
15436– \$15.00



Illuminated Near Number Card Insert

- Replaceable transparent insert for use with the Illuminated Test Card

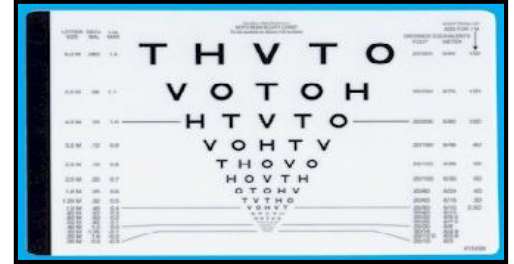
15431 – \$15.00



Illuminated Near E Card Insert

- Replaceable transparent insert for use with the Illuminated Test Card

15437 – \$15.00



Illuminated Near HOTV Card Insert

- Replaceable transparent insert for use with the Illuminated Test Card

15439 – \$15.00

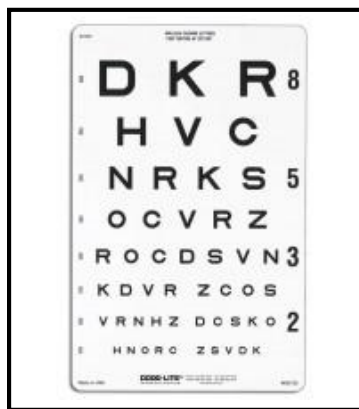


Illuminated 3m Letter Card Insert

- Replaceable transparent insert for use with the Illuminated Test Card

15435 – \$15.00

Test Cards / Illuminated Inserts



Sloan Letter Linear-spaced Distance

- Can be used separate or with the ESV 1200 Illuminated cabinet
- Measures 9" X 14"

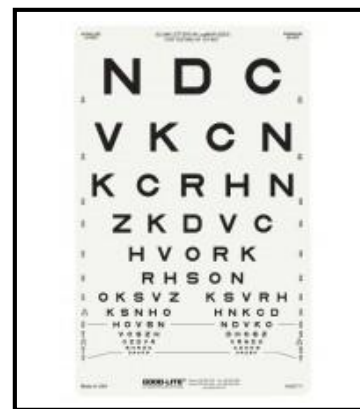
15367 – \$18.00



LEA Symbols Proportionally Spaced

- Can be used separate or with the ESV 1200 Illuminated cabinet
- Measures 9" X 14"

15369 – \$18.00



Sloan Letter Proportionally Spaced Distance

- Can be used separate or with the ESV 1200 Illuminated cabinet
- Measures 9" X 14"

15368 – \$18.00



LEA Numbers 13-Line Translucent Distance

- Can be used separate or with the ESV 1200 Illuminated cabinet
- Measures 9" X 14"

15370 – \$18.00

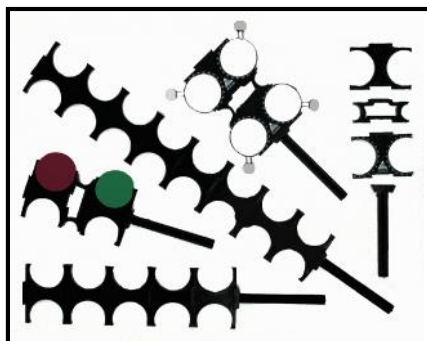
Trial Lenses / Flippers



38mm Trial Lenses

- Available in plus and minus powers: .12, .25, .37, .5, .62, .75, 1.00, 1.25, 1.5, 1.75, 2.00, 2.25, 2.50, 2.75, 3, 3.25, 3.50, 3.75, 4, 4.50, 5, 5.50, 6, 6.50, 7, 7.50, 8, 9, 10, 12 / Cylinder lenses: .12, .25, .37, .50, .62, .75, 1.00, 1.25, 1.50, 1.75, 2.00, 2.25, 2.50, 3.00, 4.00, 5.00, 6.00, 7.00, 8.00 / Prism lenses: .5, 1, 2, 3, 4, 5, 6, 7, 8, 9, 10, 12

11150 – \$10.00



Lens Holders – (lenses not included)

15142 - Lens Holder	\$6.00
15143 – Lens Holder w/axis	\$7.00
15141 – Nose Bridge	\$6.00
15140 – Handle	\$6.00
15144 – 4 Well	\$22.00
15145 – 8 Well	\$33.00
12301- 38mm Red/Green Maddox	\$26.00



Jackson Crossed Cylinder

- Set of two

11133 – +0.25 & +0.50 \$35.00

11134 - +0.75 & +1.00 \$35.00



6 Flipper Holder

- Acrylic Stand
- Holds up to 6 flippers
- Desk or wall mountable

11122 - \$15.00



Color Flipper Set

- Six standard Powers
- Color coded
- Easy to identify power

11123 – \$99.00



Flippers

- Measure 8 ½" long by 3 ½" wide
- Made of durable plastic with glass lenses

11132 – (4 lens) \$25.00

Trial Lenses / Flippers



Raff Level Trial Flipper

- Balance prescriptions with a level to eliminate off axis rotation
- Use to balance cylinder and prismatic corrections

15156 – \$39.00



Child Trial Frame

- Holds 3 lenses in front and 1 lens behind the frame
- PD range 27mm-35mm on each side
- Fully adjustable

11153– \$79.00



Pediatric Trial Frames

- Holds 3 lenses in front and 1 lens behind the frame
- PD range 27mm-35mm on each side

11154– \$45.00



Universal Trial Frame

- Holds 3 lenses in front and 1 lens behind the frame
- PD range 24mm-40mm on each side
- Fully adjustable

11151– \$105.00



Universal Trial Frame LW

- Holds 3 lenses in front and 1 lens behind the frame
- PD range 27mm-33mm on each side
- Fully adjustable

11152– \$105.00



Trial Lens Multi-Pinhole Occluder

- 5 pinhole sizes from 8mm to 1.5mm
- The smaller pinholes provide routine acuity testing while the larger pinholes provide for testing suspected reduced vision

15104– \$5.00

Trial Lenses / Flippers

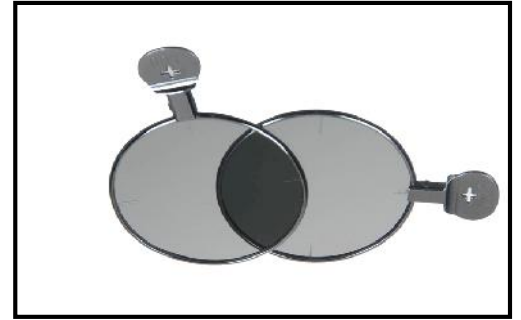
GuldenOphthalmics



Opto Clip

- Clips on top or bottom of glasses
- Holds three lenses each

15323– \$49.00



Polarized Trial Lens

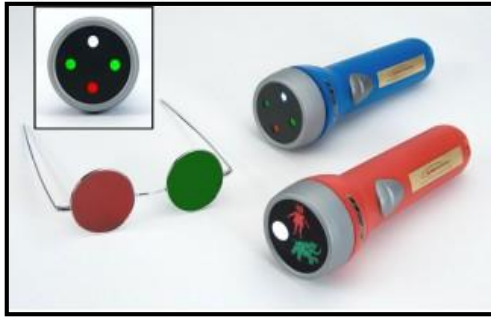
- Polarized trial lenses to be used in trial frames

11149– \$30.00

225 Cadwalader Avenue
Elkins Park, PA 19027-2020
215-884-8105
Fax 215-884-0418

e-mail: info@guldenophthalmics.com
www.guldenophthalmics.com

Vision Screening Tools



LED Worth Four Dot Test

- High durable quality
- Reversible red and green glasses
- Batteries included

15304– \$40.00



Optokinetic Drum

- Test for nystagmus
- Measure 4" high by 6" diameter
- Used for adult or children

15360– \$148.00

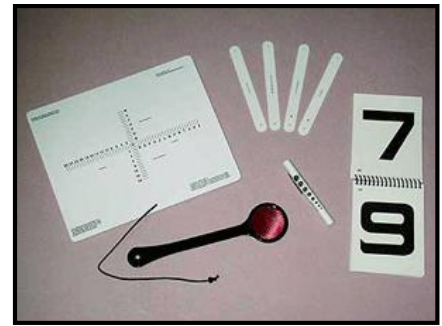


Red & Green Wrap Around Glasses

- Stylish attractive design
- No side light interference
- Snug fit around head

15316 – Adult \$16.00

15317 – Child \$15.00



Adult Screening Kit

- Excellent for vision therapy
- Includes eye alignment near card, maddox rod, fixation sticks, chronister pocket acuity card, and a reusable penlight

15310– \$72.00



Fixation Sticks

- Used for detailed accommodation stimulation targets
- Precisely calibrated for saccade testing

15302– 4 Pack \$22.00



Red & Green Black Frame Glasses

- Accurate color canceling
- Used for accurate cancellation of The Worth 4 Dot, The Three Character Test, The Lancaster Red-Green Tests, and The Hess Screen Tests colors

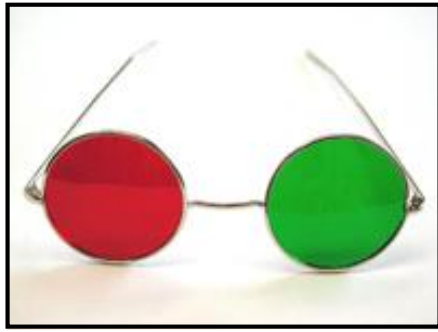
15320– 6 Pack \$30.00

225 Cadwalader Avenue
Elkins Park, PA 19027-2020
215-884-8105

Fax 215-884-0418

e-mail: info@guldenophthalmics.com
www.guldenophthalmics.com

Vision Screening Tools



Red & Green Metal Frame Spectacles

- Accurate color canceling
- Reversible metal frame
- Used for accurate cancellation of The Worth 4 Dot, The Three Character Test, The Lancaster Red-Green Tests, and The Hess Screen Tests colors
- Comes in a soft silk pouch

15105– \$19.00



Tangent Screen

- Provides a very accurate method of charting the central and para-central field of vision
- All markings are stitched in semi-visible black thread showing concentric circles, radial lines and blind spots
- Kit includes the screen, wand and a test object

11200– \$175.00



Maddox Phoria Measure

- Combines large 25mm aperture, a red maddox mounted perpendicular to the handle in a 10PD prism in a rotating disc with knurled edge
- Designed to measure anisophoria
- Comes in a leather pouch

12136– \$79.00

225 Cadwalader Avenue
Elkins Park, PA 19027-2020

215-884-8105

Fax 215-884-0418

e-mail: info@guldenophthalmics.com

www.guldenophthalmics.com