

Dual Luedde Instructions

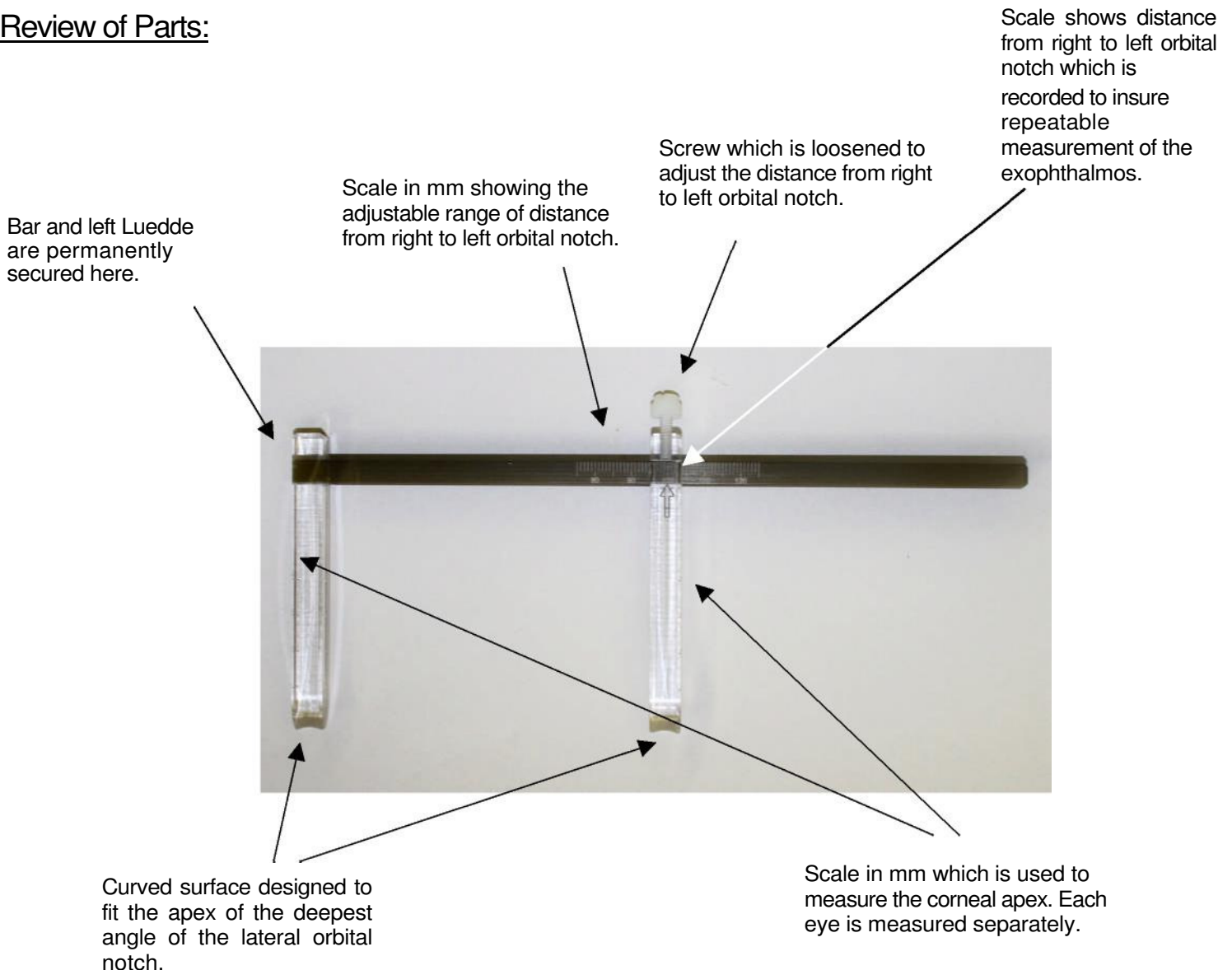
Purpose:

The purpose of any exophthalmometer is to measure the distance (exophthalmos) between the front most surface of the cornea compared to the external orbital canthus (orbital notch). The normal range varies between 12 mm and 21 mm and a difference between the eyes greater than 2 mm is considered suspicious. In the treatment of disease affecting the exophthalmos, the instrument is used to track the degree of forward (or backward) displacement of the eye.

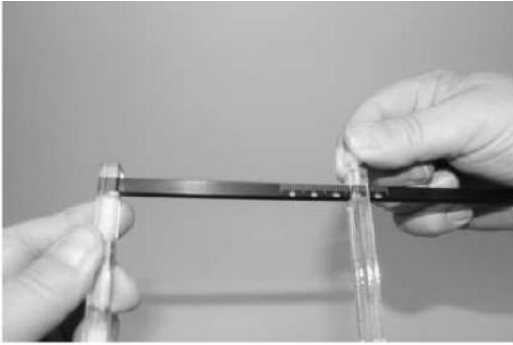
The Dual Luedde works in a manner comparable to the Hertl Exophthalmometer except that the viewing angle is varied instead of employing a prism.

The Dual Luedde, like the Hertl, is not recommended where the orbit or eye socket has been damaged. In these cases the use of the Naugle (which indexes from the cheek bone and forehead) would likely provide more consistent results.

Review of Parts:



Operation:



After cleaning, the recommended first step is to slide the Luedde to adjust the distance between the two apices of the Luedde's to match right to left orbital notch. Then tighten the set screw snug but not overly tight.

Set up a chair for the patient and select a fixation point in front of them at eye level.



Next, use your finger to locate the apex of the orbital notch on each side. Re-align the distance between the two apices of the Luedde's if necessary. Be sure you have good frontal lighting so that corneal readings can be made.

Be sure to record the distance from right to left orbital notch as shown on the black scale.



Position the Dual Luedde for an initial try as a means to help the patient understand what the proper location of the instrument will feel like. Do NOT press to hard as discouragement may result. Ask the patient to look or focus on something straight ahead.

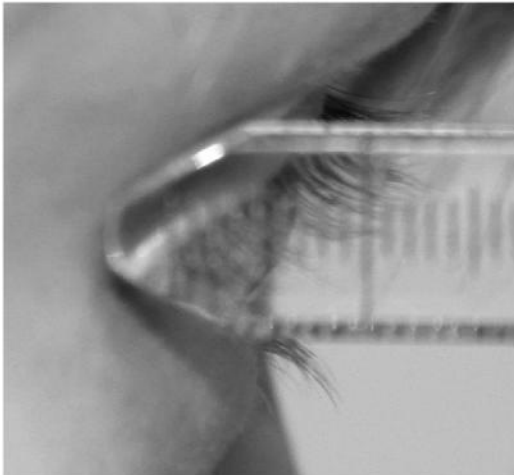


You can then make a choice as to who will maintain proper position of the instrument. Many times excellent results have been achieved by having the patient use their right hand to hold the instrument as level as possible. This also permits you to move from the patient's right side to their left side to record the corneal measures.

Operation: (continued)



Determine and record the corneal distance on the left side of the patient
Note: this determination is made looking through the Luedde at a right angle to their gaze ahead.



Then move to the right side of the patient and record the corneal distance.
Check that the Dual Luedde is still held in the same position and angle.
Be sure it is seated in the apex of the orbital notch.

Cleaning:

The Dual Luedde can be cleaned with mild soap and water or a mild glass cleaner. Do not soak.

Do not use Alcohol.

If sterilization is required, the recommended solution is glutaraldehyde as a mix at about 2% concentration. Do not soak the instrument.

Manufacturer:

MetriCide® 28 High-Level Disinfectant / Sterilant. 2.5% buffered glutaraldehyde. Recommended for immersible & heat-sensitive equipment/instruments. FDA-registered.

Made by Kerr/Metrex.

Features:

- Bactericidal, Virucidal, Fungicidal, Tuberculocidal, Sporocidal
- Convenient: no dilution necessary, just pour and use
- Non-corrosive: Compatible with all non-lensed immersible & heat-sensitive instruments/equipment
- Time-tested: Glutaraldehyde-based, 20+ year history, tried-and-true formula
- Contains surfactant: increase penetration of sterilant into instruments & equipment
- Long life: use & reuse up to 28 days

US Distributors:

Eye Care and Cure
4646 S Overland Drive
Tucson, AZ 85714
800-486-6169
FAX 520-321-1267

Price Club Dental Supplies, LLC
151 North Street
Ridgefield, CT 06877
Phone: 203-448-6007
24hr Fax: 203-841-1399